

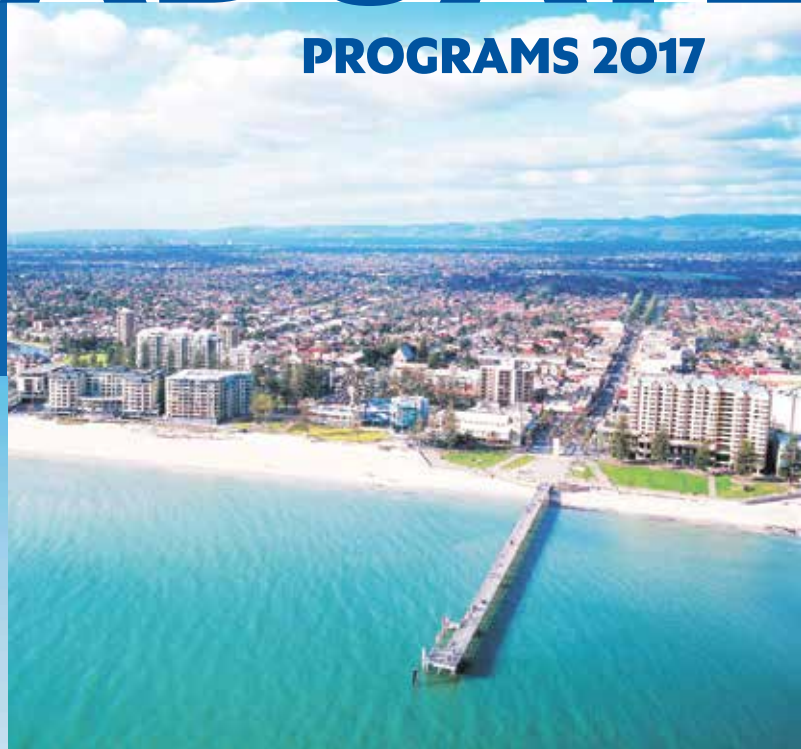


University of
South Australia

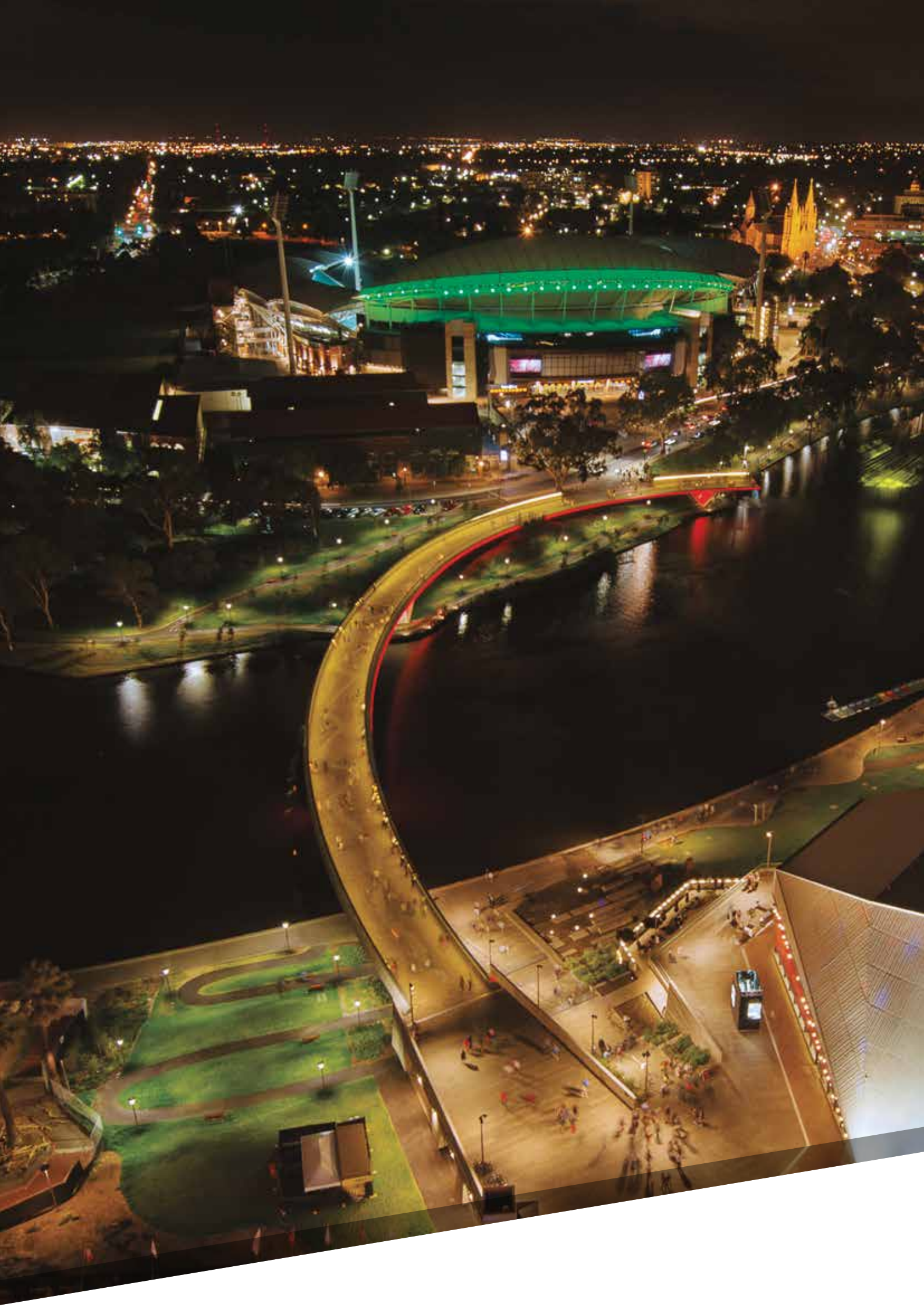
international students

POSTGRADUATE

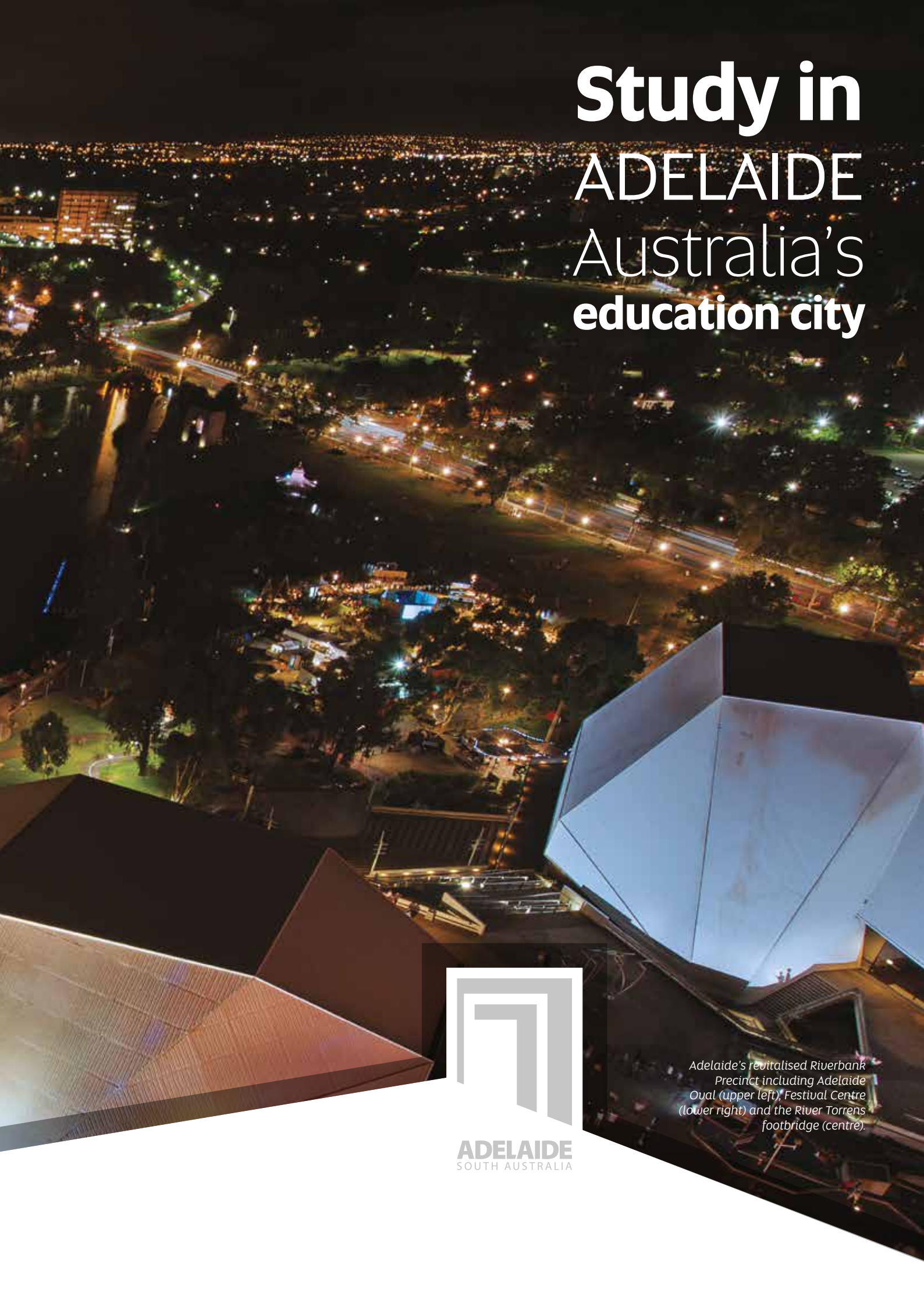
PROGRAMS 2017



CELEBRATING
25 YEARS
1991 - 2016



Study in ADELAIDE Australia's education city



*Adelaide's revitalised Riverbank
Precinct including Adelaide
Oval (upper left), Festival Centre
(lower right) and the River Torrens
footbridge (centre).*



ADELAIDE
SOUTH AUSTRALIA



Contents

Making the right choice for you	4
Australia's university of enterprise	6
Enterprising spaces.....	8
Inspired • Partnered • Excellence.....	10
Our campuses: your learning spaces	12
Our campuses: Adelaide city	14
Our campuses: suburban	16
Adelaide: one of Australia's best kept secrets.....	18
Getting to your campus	20
Accommodation: find your home.....	22
How we'll support you.....	24
On campus and online.....	25
Scholarships and grants.....	26
Join our alumni community	27
Programs and application information.....	29
Application information and complete list of degrees.....	65
How to become a research student	72

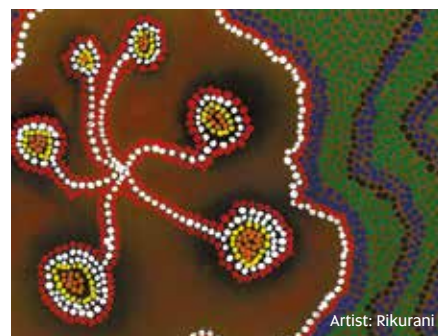


Once again the University of South Australia has been given a 5 star rating for Excellence in the 2015 QS World University Rankings.

Our tradition of excellence in areas of most interest to students continues. We also received high ratings for the areas of employability and research.



- Teaching
- Facilities
- Internationalisation
- Employability
- Inclusiveness
- Social responsibility
- Research
- Specialist criteria



Artist: Rikurani

Acknowledgement of Country

UniSA respects the Kaurna, Boandik and Barngarla peoples' spiritual relationship with their country. We also acknowledge the diversity of Aboriginal peoples, past and present.

▶ unisa.edu.au/RAP



This icon is your cue to view more information about a topic from this guide online. Enter the URL provided into your browser and view the corresponding video for more detail from our students.



Welcome

I'm delighted that you're considering undertaking your studies at the University of South Australia – your time at university will be the greatest intellectual adventure of your life.

It's an exciting time to be joining us as we celebrate our 25th birthday. In those short 25 years we have become one of the world's very best young universities – ranked by QS as number 25 on their list of the world's best universities under 50, and number 35 on the THE Top 100 under 50 list. Excellence in Research Australia, the Australian government's national research evaluation framework, has just evaluated University of South Australia's research and concluded that 97 per cent of our research is at World Class or above.

Based in Adelaide, which is a wonderful place to study, the University of South Australia is the state's largest university with around 32,500 students on our two city campuses, two suburban campuses and two regional campuses, including around 6,000 international students. Our programs are designed with strong professional emphasis and in partnership with industry and our graduate employment rates are the best in the State and are well above the national average. In fact, the Good Universities Guide for 2016 rates us as the top university in South Australia for getting a full-time job.

We are educating people for global careers and we have some very powerful partnerships with global institutions such as Shandong, Tianjin and Beijing Normal Universities in China, Keio University in Japan, Trinity College in Dublin, University College in London and numerous collaborative efforts with universities elsewhere in Europe and North America.

If you decide that the University of South Australia is the right place for you, we will do everything possible to set you on a path to the career of your choice, so that as a graduate, you can take your place as one of the new professionals driving national and international economies through your skills, capabilities and innovation potential.

I hope that you will consider joining us and I look forward to seeing you on campus soon.

Professor David G. Lloyd

Vice Chancellor and President

Making the right choice for you

Discover how gaining further qualifications with us will advance your career – wherever you choose to go.

Career enhancing qualifications

Postgraduate qualifications from the University of South Australia provide the advanced experience, skills and expertise you need to enhance your career and progress into roles in management, research and more. We offer the ideal environment to grow your career through our commitment to industry and enterprise, our state-of-the-art facilities and our internationally-recognised teaching and learning.

World-class facilities

Each campus is equipped with the latest facilities including modern lecture theatres, libraries, workshops, laboratories and areas that simulate the workplace. Facilities extend to a fully interactive online learning environment to support your study off campus.

Highly regarded teachers

Learn from staff who are highly involved in research with industry and the community. More than 70 per cent of our academic staff hold doctoral qualifications, ranking us in the top ten nationally.

Flexible and convenient

The University has invested in a multi-million dollar personal learning environment providing you with online support 24 hours a day, seven days a week. You may take advantage of evening classes and options for you to tailor your study to fit around your employment and personal commitments. We have staff to support you along the way, to answer your questions and help make your life at university easier.

Liveable community environment

When you join the University of South Australia community, you will uncover more than textbooks and theories. Your campus comes alive with events, entertainment, sports, clubs and social events. Life in Adelaide offers all the benefits of big city living, and yet everything is easily accessible. The city enjoys one of the highest standards of living of any city in the world, yet is one of the least expensive.

↳ unisa.edu.au/postgrad

Festive and colourful

"Adelaide is a festive city, where there are all sorts of joyful activities all year long, sports games, concerts, parades, celebrations, festivals and open-air movie nights. It is a lovely place, which is not far from the beach, close to the mountains and connected to farms and valleys, so people can go beach walking, fishing, crabbing, camping, hiking, fruit picking and wine tasting.

"Life here is peaceful and colourful".

Huijin Huang, China

Master of Business Information Systems





70%

**OF OUR ACADEMIC
STAFF HOLD DOCTORAL
QUALIFICATIONS**

DEPARTMENT OF EDUCATION
STAFF DATA



CELEBRATING
25 YEARS AND

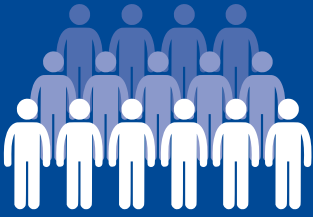
**25TH PLACE AMONG
THE WORLD'S TOP
50 UNDER 50**

2015/16 QS TOP 50
UNIVERSITIES AGED UNDER 50

NO. 2 IN AUSTRALIA

**FOR STUDENT
SUPPORT SERVICES**

2015 INTERNATIONAL
STUDENT BAROMETER



**SA'S LARGEST
ACADEMIC COMMUNITY**

32,500+ STUDENTS
2,500+STAFF



**AUSTRALIA'S LEADING
UNIVERSITY FOR
INTERDISCIPLINARY
RESEARCH**

2015 U-MULTIRANK



**COLLABORATING
WITH MORE THAN
2000**

COMPANIES
WORLDWIDE

Australia's university of enterprise

The University of South Australia is a globally connected and engaged university, helping solve the problems of industry and the professions. Our teaching is industry-informed, our research is inventive and adventurous. We create knowledge that is central to global economic and social prosperity. We are Australia's university of enterprise.

"We are prioritising the right elements to build an industry-connected, globally enterprising university and one which educates its students for the careers of modern times."

*Prof. David Lloyd
Vice Chancellor and President
University of South Australia*

An enterprising spirit...

We've spent 25 years building our spirit of enterprise. Beginning with three elements, study, solutions and connections, we've built an industry-connected university with global reach and one that is ready to create and respond to change.

Study

As South Australia's largest university, we offer a wide and varied range of programs in arts, education, social sciences, business and law, health sciences, as well as aviation, engineering and IT, environments, science and mathematics.

Solutions

We are a solutions-oriented university, taking on the challenges of tomorrow and aligning our research toward providing answers in these areas.

Connections

Real solutions don't happen without great partnerships and we're teaming up with local icons and international heavyweights to drive the advancements behind a better society.



Enterprising spaces

We've got some exciting plans for the future with new learning spaces in health, science and innovation – all in the heart of Adelaide's booming West End.

Great Hall


The Great Hall will become the University's heart of community. Featuring a purpose-built amphitheatre, the Hall will be home to UniSA Sport, graduations, exams and events. It will also form a new hub for sports and fitness at City West with a fully-equipped fitness centre and swimming pool, including lap and recreational areas.

▶ *Two members of the Great Hall's design team are UniSA Master of Architecture students. Find out more about their experiences working on this iconic project online at unisa.edu.au/Campus-Facilities/Maps-Tours/Great-Hall*

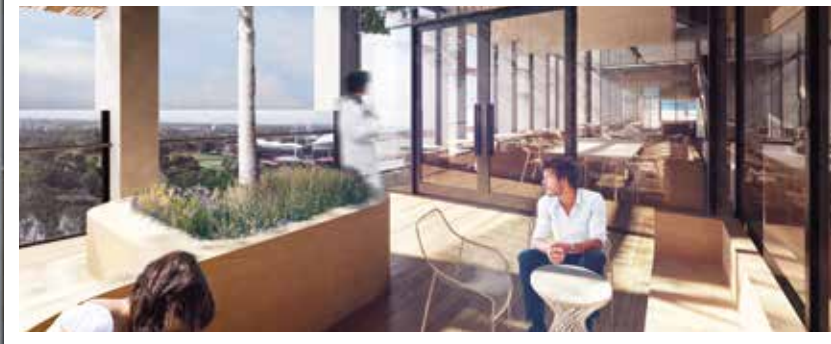


Health Innovation Building

This exciting new space will form part of the South Australian health and biomedical precinct, creating a number of new health research, teaching and community engagement opportunities. The building will be home to the Centre for Cancer Biology, our Allied Health Clinics, the ICT Innovation and Collaboration Centre, and the Science Creativity Education Studio (Sci.C.Ed) – a new space for students to innovate, create and collaborate.



▶ Take a fly through the plans for our new Health Innovation Building online at unisa.edu.au/hib



Student Lounge

Designed by our students, for our students, UniSA's new Student Lounge is a space for our student community to come together outside of study time. A redevelopment of the first level of the Catherine Helen Spence building, the Lounge includes its own Town Square, College Green, as well as burrows, nooks and a variety of spaces to meet, greet and play. Our new Child Care Centre has also opened nearby on Waymouth Street.



▶ unisa.edu.au/enterprisingspaces

Inspired • Partnered • Excellence

Research at UniSA is inspired by challenges and opportunities, partnered with end users and communities, and underpinned by excellence.

In 2015, UniSA achieved the top '5' rating for research excellence that is well above world class standard in 16 research fields including Environmental Science and Management, Physical Chemistry, Nursing and Psychology.

Bringing together diverse ideas

Contributing to a research environment that is vibrant, responsive and outward facing are the University's research themes. The themes link our research strengths and address local and global socio-economic needs and include:

- > **An age friendly world** – unlocking human potential across the community through intergenerational approaches.
- > **Transforming industries** – building industries and economies for the future.
- > **Cancer prevention and management** – taking on one of the world's greatest health challenges with the aim of improving prevention, diagnosis, treatment and patient care.
- > **Society and global transformations** – transforming societies through global citizenship.
- > **Healthy futures** – understanding, treatment and prevention of, chronic diseases.
- > **Scarce resources** – developing safe and sustainable practices for managing the world's finite resources – making more with less.

Delivering solutions with excellence

In 2015, Excellence in Research Australia ranked 97 per cent of our assessed research as at or above world-standard. This result includes top marks (an ERA five) for our research in 16 fields including Biochemistry and Cell Biology, Civil Engineering, Clinical Sciences, Psychology and more. For a full list of performance in ERA categories please visit

↳ unisa.edu.au/research

Some of our recent discoveries and innovations include:

Research into potential new cancer hope

Ground breaking cell biology research from the Centre of Cancer Biology (CCB), which is an alliance between UniSA and SA Pathology, is discovering how to inhibit the growth and spread of cancer by controlling the production circular RNA (ribonucleic acid molecules), that has links to cancer metastasis.

Solving real world-defence issues

In collaboration, the Defence Science Technology Organisation (DSTO) under the Defence Science Partnerships Program and the University's School of Health Sciences is using digital anthropometry to optimise the fit of Royal Australian Navy personnel to their environment.

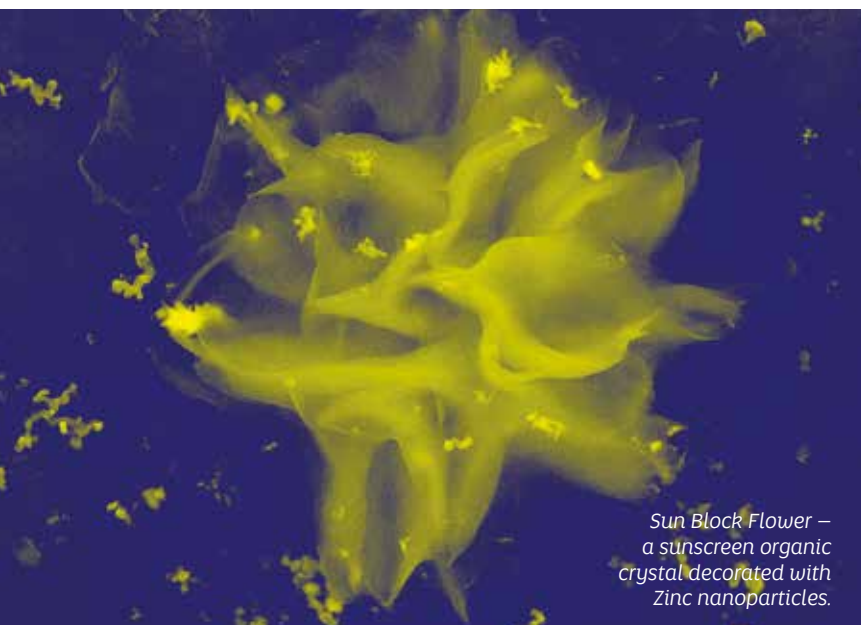
Train software that's better for the environment

A train driver advice system that helps trains stay on time and reduce energy and carbon emissions by up to 20 per cent is being used in Australia, New Zealand, the UK and now France. The software, developed at UniSA, recently demonstrated that the advice system can reduce congestion by sending updated timetables to trains in real time.

A Eureka moment for the storage of energy

A team at UniSA has won the ANSTO Eureka Prize for Innovative Use of Technology for their work in 'freezing salt to store solar power'. This new phase-change system provides energy storage at up to one tenth of the cost of batteries and has the potential to resolve the mismatch between generation hours and electricity use, so that solar and wind power can form an even larger slice of the national generation grid.

Find out how to become a research student at the University of South Australia on pages 72–78.



Sun Block Flower – a sunscreen organic crystal decorated with Zinc nanoparticles.

97%

**OF OUR RESEARCH
AT OR ABOVE
WORLD-CLASS***

THE AUSTRALIAN RESEARCH COUNCIL'S
2015 EXCELLENCE IN RESEARCH FOR
AUSTRALIA (ERA)

**Of ERA assessed research*

TWO UniSA
RESEARCHERS

**2015 AUSTRALIAN
MUSEUM EUREKA
PRIZE WINNERS**



*Kyall Pocok, PhD Researcher, Future Industries Institute.
Photo from the Images of Research Photography Competition,
Kyall is inspecting a microfluidic device post-fabrication using a hot
embosser (EVG520HE, EVG, Austria).*

Our campuses: your learning spaces

Spacious, modern learning environments to enhance your study experience.

👉 unisa.edu.au/campus-facilities



Mawson Lakes

The modern Materials and Minerals Research and Learning Hub, well-equipped engineering labs and study spaces, help to create the ideal home for science and technology learning at Mawson Lakes.



Students in the Mechatronics Laboratory at Mawson Lakes campus.



Magill

Psychology and social work students hone their counselling and interpersonal skills in observation learning spaces to prepare for the workplace.



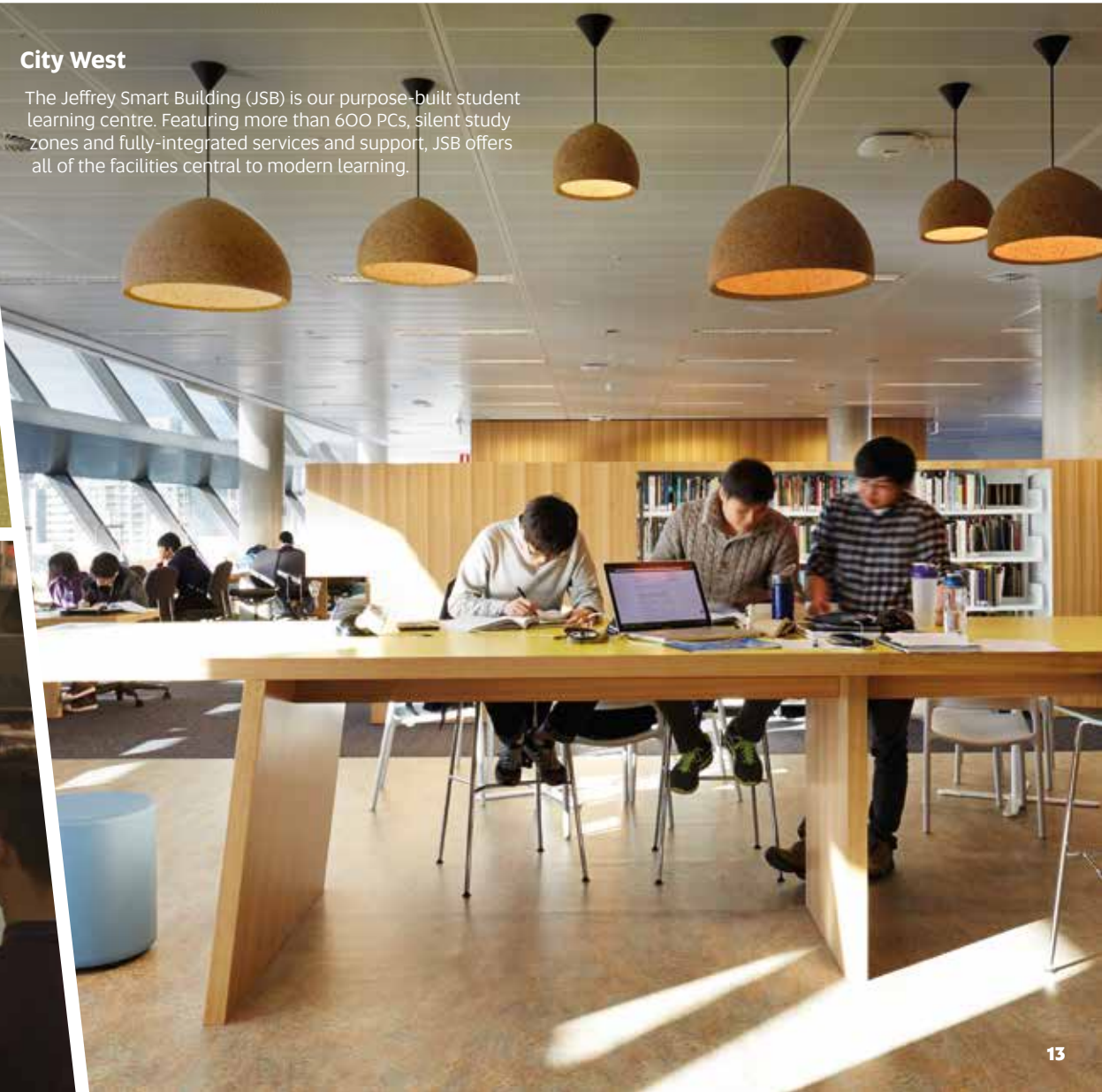
City East

State-of-the-art pharmacy labs and the University's community health clinics provide students at City East campus with invaluable real-world experience.



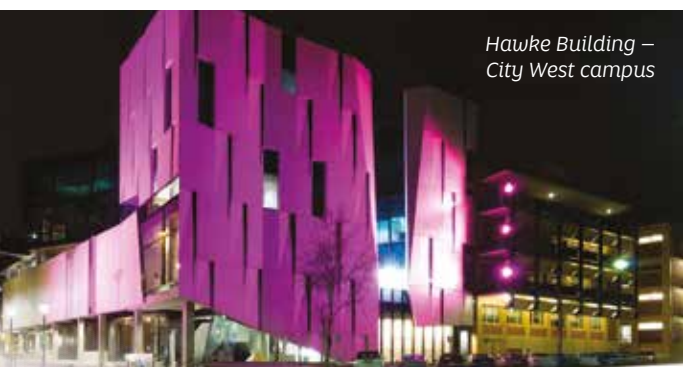
City West

The Jeffrey Smart Building (JSB) is our purpose-built student learning centre. Featuring more than 600 PCs, silent study zones and fully-integrated services and support, JSB offers all of the facilities central to modern learning.



Our campuses: Adelaide city

Our two city campuses are at each end of the cultural boulevard of North Terrace, and convenient to all city facilities.



Hawke Building –
City West campus

Research at City West

The Ehrenberg-Bass Institute for Marketing Science is one of the world's leading centres for research into marketing. Its cutting-edge research is embedded into the University's marketing curriculum so students can learn from the same marketing scientists that advise senior marketing executives from all over the world.

The Hawke Research Institute encompasses a number of research concentrations working in the areas of work and life, education and literacy, conflict management, equity, gender, child protection, postcolonial studies, religion and social policy.

Free legal advice

The University's Legal Advice Clinic provides confidential, free legal advice to members of the community. The clinic is staffed by law students who offer legal advice to clients under the supervision of a managing solicitor.

City West Campus

At the western edge of the city, City West campus is just a short walk from the Adelaide Railway Station and tram. City West is in the heart of Adelaide's major arts, culture and entertainment precinct, and in the hub of vibrant new developments in business and health.

What you'll study

Art, Architecture and Design see page 38
 UniSA Business School see page 30

On campus

- > Brand new learning spaces
- > Award-winning visual art and design studios
- > Moot court for law students to participate in real life debates
- > David Unaipon College of Indigenous Education and Research
- > Modern lecture theatres
- > Australia's only architecture museum
- > Cafés with indoor and outdoor dining
- > Post office

Nearby

- > Live music venues
- > Fashion, music and book stores
- > Cafés and restaurants
- > Lion Arts Centre and Mercury Cinema
- > The Jam Factory gallery
- > The site of Adelaide's developing health precinct
- > Adelaide Oval
- > Central Markets and Chinatown
- > Laneway cafés and restaurants

The Samstag Museum of Art (pictured) is one of two public art galleries at City West campus, along with the Kerry Packer Civic Gallery
 Luminous World – Contemporary art from the Wesfarmers Collection at Samstag Museum of Art 2014. Photograph by Alex Kwong.





Brookman Building – City East campus

City East Campus

In the heart of the city, City East campus is just a short distance from the Rundle Mall shopping district and some of the city's best cafés, restaurants and bars. Students enjoy a wide range of hands-on learning opportunities, alongside spaces for leisure activities to enhance their study experience.

What you'll study

- Health and Medical Sciences see page 48
- Natural and Built Environments see page 60

On campus

- > Purpose-built health science laboratories
- > Model pharmacy equipped with computers and dispensing systems
- > Anatomy lab
- > GP and medical clinic for students and staff
- > Fully equipped gym
- > Cafés and outdoor plaza

Nearby

- > Rundle Street cafés and shops
- > Zoo
- > Botanic gardens
- > Museum, state library and art gallery
- > Picturesque banks of the River Torrens
- > National Wine Centre
- > Adelaide Oval

Find out more about our city and suburban campuses at
unisa.edu.au/campus-facilities/maps-tours

Research at City East

The Sansom Institute for Health Research at the City East campus brings together the University's internationally recognised research strengths in molecular medicine, pharmaceutical science and the quality use of medicines and pharmacy practice.

Low cost health clinics

The campus is home to a number of health clinics providing exercise physiology, mammography, physiotherapy and podiatry services to the public. The Mobile Allied Health Clinic travels to schools, community and sporting events, aged care facilities and homeless shelters. These clinics give students vital practical experience under professional supervision, and the benefit of discounted health services to staff, students and the wider community.

Purpose-built nursing practice labs



Our campuses: suburban



Magill Campus

Just a short distance from the city, Magill campus is located in Adelaide's eastern suburbs and features lush gardens and open spaces providing a relaxed and picturesque setting. Its study facilities are world-class and offer students the latest in interactive learning opportunities.

What you'll study

Education see page 42
Psychology, Social Work and Human Services see page 46

Research at Magill

Researchers at Magill campus explore how we live, work and function as a broader society through research centres in languages and culture, applied psychology, and work and life.

Psychology Clinic

The Magill campus is home to the University's Psychology Clinic which provides an affordable and high standard psychological and counselling service to the general public. The Psychology Clinic is staffed by provisional psychologists enrolled in our Master of Psychology (Clinical) postgraduate program and supervised by qualified academic staff and experienced clinical psychologists.

On campus

- > Multimedia studios and editing suites
- > Theatre for stage productions
- > Innovative social work studio learning facility
- > Gym
- > Outdoor sports fields
- > Swimming pool
- > Cafés and outdoor dining area
- > 15 hectares of parklands and lawn

Nearby

- > Cafés and restaurants
- > Norwood Parade shopping precinct
- > Movie cinemas
- > Historic winery
- > National parks
- > Cleland Wildlife Park



Students have access to a range of study areas around campus.



Cutting-edge facilities include fully-functional clean rooms for cell therapy research

Mawson Lakes Campus

Located in one of Adelaide's premier developing suburbs, our Mawson Lakes campus boasts contemporary teaching, learning and research facilities. It's also home to lawn and wetland areas, buzzing cafés, and leisure facilities to help you get the most out of your experience.

What you'll study

Data and Information Management	see page 52
Education	see page 42
Engineering	see page 56
Natural and Built Environments	see page 60

On campus

- > Interactive learning spaces for engineering students
- > South Australia's largest IT school
- > Design and technology, and science teaching facilities
- > Sports centre complete with fitness gym
- > Drama centre
- > Cafés, lawns and outdoor dining areas
- > Ecological precinct and wetland areas

Nearby

- > Cafés and restaurants
- > Walking and bike trails
- > Drive-in movie cinema
- > Sporting grounds and golf course
- > Mawson Centre – a shared space for the University and the community
- > Technology Park

Find out more about our city and suburban campuses at

▶ unisa.edu.au/campus-facilities/maps-tours



MM Building and The Plazzo – Mawson Lakes campus

Research at Mawson Lakes

Mawson Lakes is home to the University's Future Industries Institute (FII). The Institute undertakes research across key industries including minerals and resources engineering, energy and advanced manufacturing, environmental science and engineering, and biomaterials engineering and nanomedicine.

Planetarium

The Mawson Lakes campus is home to Adelaide's only Planetarium, a room with a dome shaped ceiling on which the night sky is displayed through a star projector. The projector can show the position of constellations, stars and planets. It also displays the relative position and brightness of about 5,000 stars that are visible from the Southern Hemisphere.

Adelaide: one of Australia's best kept secrets

The University of South Australia is located in the heart of Adelaide, Australia's education city and the capital of the state of South Australia.

Fast facts

Capital city:
Adelaide

State population:
1.65 million

Adelaide population:
1.2 million

Language:
English

Currency:
AUD\$

Area:
984,377 square kilometres

Coastline:
3,700 kilometres

Major exports:
Metals, wine, education

Explore our campuses

Adelaide.....see page 14

Suburban.....see page 16

See page 21 for our campus location map.





Glenelg Beach

The city

Adelaide was ranked in the top five of the world's most liveable cities in the 2015 Economist Intelligence Unit's liveability survey (see next page for more detail). It was also voted Australia's second most liveable city according to the Property Council of Australia's My City: The People's Verdict.

The city is beautiful and well-ordered, surrounded by parklands and within easy reach of long, white uncrowded beaches and the lush green hills and valleys of Australia's premier wine districts.

You'll find it makes an ideal home away from home with a sense of community usually reserved for small towns, combined with the vibrant activity of a capital city.

Adelaide is a globally-connected city, sharing partnership agreements with cities around the world. These include:

- > Austin, USA
- > Christchurch, New Zealand
- > George Town, Malaysia
- > Himeji, Japan
- > Qingdao, China
- > Dalian, China
- > Chengdu, China

The state

South Australia is home to long summers and stunning beaches. It is famous for award-winning food and wine, as well as its sensational entertainment, events and festivals.

The State's coastline is more than 3 800 km long and offers exciting seaside adventures including fishing, boating and surfing. Further inland, visitors can experience unique and spectacular sites including the Flinders Ranges and outback, World Heritage-listed caves and more.

Why studying here is so rewarding

Accessible

Adelaide is big enough to offer all the advantages of city living – an energetic business environment and a vibrant cultural life – yet the city is small enough so that those advantages are easily accessible. You can get from the airport to your city campus in 15 minutes, or from your city campus to the beach in 15 minutes, and it's easy to find your way around.

Accepting

With a population of just over one million people, Adelaide has a democratic system of government and is tolerant of religious beliefs and practices. Almost one in four people in South Australia were born overseas and the rest can trace their backgrounds to more than 120 countries.

Affordable

Adelaide enjoys one of the highest standards of living of any city in the world, yet is one of the least expensive. The city is regularly cited as one of Australia's most affordable in the Economist Intelligence Unit's annual Worldwide Cost of Living Survey.

Life in Adelaide

► unisa.edu.au/studentstories

**THE ONLY
AUSTRALIAN
CITY IN
2015 NY TIMES
TOP 52 PLACES
TO GO**

Getting to your campus

With four campuses around Adelaide – getting here couldn't be easier.

Public transport

You'll find bus stops near each campus and train stations close to the city and Mawson Lakes campuses. Check your bus, train or tram options on the Adelaide Metro website. You'll also be entitled to student discounts on tickets once you've enrolled.

➤ adelaidemetro.com.au

Car parking

The Magill and Mawson Lakes campuses provide car parking for students. Tickets are purchased from the easily located 'Pay and Display' metered parking systems around campus and will cost you from 15 cents an hour to \$1.50 for a full day (8am–6pm). City East and City West don't offer on-campus parking, although you may access metered on-road parking or commercial off-road parking nearby. City parking may cost from around \$4 an hour to \$15 a day (for early bird parking).

Note all costs are in Australian dollars and are only approximate.

Campus Connector

We are currently running a free bus service between the Magill and Mawson Lakes campuses to make life easier for staff and students who make the journey. For full timetable and route details visit:

➤ unisa.edu.au/campusconnector



Access parking

Access parking for people with a disability is available with a parking permit on each campus, including the city campuses. Council disabled parking bays are also available.



Photo courtesy of SATC

Ride your BIKE to university

Cycling is a great way to get to your campus. It's fun, cheap, good for the environment, and an excellent form of exercise. Each campus has shower facilities and secured bicycle storage areas. You can also hire an Adelaide Free Bike from Security at City East or City West to get around during daylight hours.

Motorcycle parking

You'll also find motorcycle parking on university grounds at City East, Magill and Mawson Lakes campuses, accessible with the display of a UniSA parking permit. At City West, motorcycles can be parked in the designated council parking bays.

➤ unisa.edu.au/gettingtocampus

University of South Australia locations

- 1 CITY WEST CAMPUS
61–73 North Terrace, Adelaide
- 2 CITY EAST CAMPUS
Corner Frome Road & North Terrace, Adelaide
- 3 MAWSON LAKES CAMPUS
Mawson Lakes Boulevard, Mawson Lakes
- 4 MAGILL CAMPUS
Lorne Avenue, Magill

Places of interest

-  **UNILODGE STUDENT ACCOMMODATION**
30 Victoria Street, Adelaide
-  **URBANEST STUDENT ACCOMMODATION**
12 Bank St, Adelaide
-  **ADELAIDE OVAL**
International and national entertainment and sporting events
-  **ADELAIDE CENTRAL MARKETS**
Fresh produce, groceries
-  **CHINATOWN**
Adelaide's home of chinese food and culture
-  **ADELAIDE FESTIVAL CENTRE**
Adelaide Festival, theatre, cabaret, concerts
-  **ADELAIDE RAILWAY STATION**
Central terminus of the metropolitan railway system
-  **ADELAIDE CULTURAL HUB NORTH TERRACE**
Museum, state library and art gallery
-  **ADELAIDE EVENT ZONES**
Adelaide Festival, Fringe, Clipsal 500, WOMAdelaide
-  **ADELAIDE'S BOTANIC GARDENS AND ZOO**
Palm House, Bicentennial Conservatory
-  **RUNDLE STREET**
Cinemas, eateries, coffee shops
-  **RUNDLE MALL**
Central shopping precinct



We can meet you at the airport

One big advantage of Adelaide is its accessibility, with direct flights from major Asian airports and all Australian capital cities. We offer a free on-arrival reception service and if you complete the online booking form before you leave home we will meet you at the airport.



Accommodation: find your home

Adelaide has a variety of accommodation options to suit different requirements and budgets. You might like to live in a student housing facility or private rental.

Dedicated student accommodation

Dedicated student housing offers well-equipped accommodation options as well as the benefit of living alongside fellow students. The University works closely with a number of providers. Options include student hostels, apartments and residential colleges in both city and suburban locations.

Student hostels

\$135–\$230 per week

Hostels are generally located in the suburbs and provide fully-furnished single rooms with shared kitchen, bathroom and recreational facilities. These are great places to meet people and build networks.

Apartments

\$150–\$390 per week

A variety of student apartment options is available in the city and near suburban campuses. These include fully-furnished one to six bedroom apartments, spaces with shared kitchen, living and bathroom facilities. Chores and household expenses are usually negotiated with fellow tenants.

Residential colleges

\$300–\$440 per week

Located in North Adelaide, a 10 minute walk from the city, are a number of residential colleges which offer fully-furnished single rooms with a bed, desk, chair, telephone and wardrobe. Most include meals and provide access to computers, the internet, a library, music rooms, sporting and laundry facilities.

Non-profit housing

Several not-for-profit and subsidised housing options are open to students. Eligibility criteria and waiting lists apply.

Note: all costs are per person in Australian dollars and are only approximate.

Student accommodation providers

A number of providers offer a variety of dedicated student accommodation options conveniently located at sites around the city and nearby to our campuses.

Please see the map on page 21 for site locations.

UniLodge

UniLodge

Offers an extensive range of city centre accommodation styles to meet most budgets. All sites are located within walking distance of the University's city campuses, shopping precincts including the Adelaide Central Market and cosmopolitan East End, and public transport links. Options include affordable share accommodation, single rooms, deluxe apartments and more.



Urbanest

Located in the heart of Adelaide city, **urbanest** North Terrace is directly across the road from the central railway and tram stations and bus links to a number of suburbs. It is a five-minute walk to Rundle Mall – Adelaide's premier shopping precinct – and in between our City East and City West campuses. Whether you want to live in a shared apartment or your own studio room, **urbanest** North Terrace offers a variety of rooms to suit a range of budgets.

Accommodation

👉 unisa.edu.au/accommodation

📺 unisa.edu.au/studentstories

Private rental accommodation

You may prefer to organise your own private housing and the University has made searching easier through our new private rental accommodation database.

Student rental database

Many properties listed on the University's user-friendly database are targeted towards students seeking accommodation just like you, so the site offers a great way to find the ideal place to stay. Log in for exclusive search access, or use the site app from your mobile device.

You can also look for vacancies through real estate agencies and newspaper classifieds.

➤ unisa.edu.au/accommodation/rental

Note: the University does not inspect private rental properties (including those on the rental database). It is very important that you inspect the accommodation carefully, satisfy yourself of its suitability and meet future housemates before paying money or agreeing to a lease.

Private rental \$100–\$350 per week

Renting privately can be a very affordable housing option if you are prepared to shop around and share with others. You can rent an entire property, share with other students or live in a home with a family, couple or single person.

Homestay/private boarding \$250–\$300 per week

Students can live in a home with a family, couple or single person. Costs include your own furnished rooms, meals and utilities. Stays can be as short as four to six weeks.

Note: all costs are in Australian dollars and are only approximate.

Temporary accommodation

If you have not finalised your long-term accommodation, please ensure that you arrange temporary accommodation BEFORE arriving in Adelaide. Plan to arrive TWO WEEKS before the start of your program to allow enough time to select accommodation and get settled.

➤ unisa.edu.au/temporary-accommodation

Housing FAQs

Unsure about your rights? Avoid common rental traps by checking out our helpful Housing FAQs. Contact us for more advice on +61 8 8302 0877 or accommodation@unisa.edu.au



How we'll support you

Our dedicated learning support services are designed to help students succeed. Find help on campus or access support online.

We have staff on each campus to answer your questions and help make your life at university easier. There are personal, academic and social support services including family support and childcare, common rooms and prayer rooms, security offices and our students' association – USASA.

Each campus has an office known as Campus Central with staff available to help you with your enrolment, ID cards, fees, timetables, student support services and graduation eligibility.

Help with your studies

We provide a range of online services and resources, including some designed specifically for international students. We also offer face-to-face international student support including counselling and disability, careers, study help, student visas and student health cover. This support is tailored to help you succeed and includes strategies for adapting to university, advice on academic issues, careers information and more.

Study help

Our team of Learning Advisers is dedicated to helping you develop academic and professional literacies and learning skills needed during your studies and eventually, in the workplace. The team provides assistance to all students, whether native or non-native speakers of English.

▶ unisa.edu.au/studyhelp

Family support

The University also offers advice and assistance on settling into life in Adelaide and Australia for partners or other family members who accompany international students.

Getting started

We offer assistance to help you settle into university and Adelaide, including specialised services and staff for international students. These people can help you with your transition to the University of South Australia and provide information and advice about:

- > On arrival transport to your accommodation
- > Life in Adelaide
- > Your orientation to university
- > Your work rights in Australia
- > Community and government services
- > Academic policies and procedures

Student support services

▶ unisa.edu.au/internationalstudentsupport

▶ unisa.edu.au/studentstories

TOP 5 OF 34

AUSTRALIAN INSTITUTIONS FOR:

- accommodation cost
- campus eating places
- career advice
- disability support
- financial support
- formal welcome
- living cost

2015 INTERNATIONAL STUDENT BAROMETER

Travel opportunities

We offer a range of international opportunities including student exchange, study tours and volunteer programs. Short term and full-semester exchange opportunities are available to local and international students looking to complete part of their postgraduate studies overseas. International students receive the same consideration as local students and a range of travel grants are available to eligible students. Explore the possibilities at:

▶ unisa.edu.au/exchange

WE HAVE EXCHANGE ARRANGEMENTS WITH
80+ OVERSEAS PARTNER INSTITUTIONS
IN MORE THAN 24 COUNTRIES

On campus and online

Access convenient learning options and spaces, including digital resources and services anytime, anywhere and on any device.

Learning on campus

The library provides easy access to a large range of online resources specific to your area of study including books, journals, databases and more. We have private and group learning spaces available on every campus and you can connect your own device to our free wi-fi.

24/7 online learning

We have a multi-million dollar interactive online learning environment that you can access 24 hours a day, 7 days a week. This includes online submission and return of assignments, and resources and services that support learning including virtual classrooms and lecture recordings.

Research

Make the Library catalogue and databases your first stop for researching your assignments. You can save time by using our online reference and citation tools, and attend our workshops designed to take you beyond Google.

Mobile access

With the UniSA App for Apple and Android devices, you can customise your on-line learning environment to suit your own needs.

Getting help

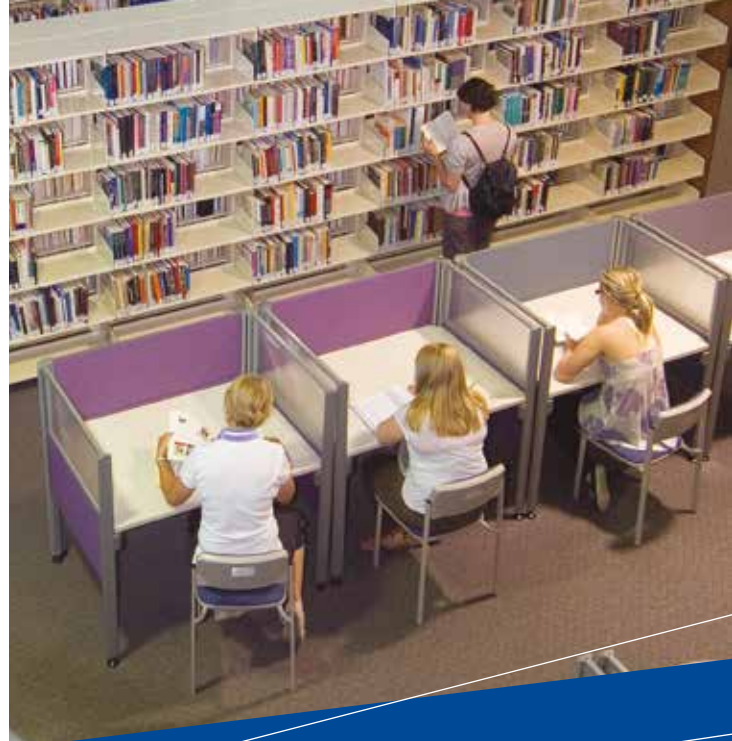
On-campus

Library staff can be contacted virtually using video conferencing or you can arrange to meet in person with one of our Librarians for help in finding information to assist you with your study or research.

Anywhere

Get help from the Ask the Library/IT service by phone, email, video and chat or use one of our many online subject guides.

See back cover for more information on connecting with UniSA.



LIBRARY RESOURCES BY NUMBERS:

520,000

ELECTRONIC BOOKS

70,000

ONLINE JOURNALS

27,000

eREADINGS

3,000

PCS FOR STUDENTS

**MILLIONS
OF DOLLARS**

**WORTH OF GRANTS AND
SCHOLARSHIPS**

ARE AWARDED BY THE
UNIVERSITY EACH YEAR

2500

STUDENTS

BENEFIT FROM OUR
SCHOLARSHIPS EACH YEAR

Scholarships and grants

You may be eligible to receive financial support through a scholarship. We offer an extensive range of scholarships recognising the varying needs of students.

All students

We have a variety of scholarships, which are tailored to students' individual circumstances. These include support for high achievers and students in need. The best way to see what you may be eligible for is to search our website.

✦ unisa.edu.au/international-scholarships

Research students

Generous support is also available for research students – both domestic and international.

See page 72 for more details.

Australia Awards

The Australia Awards aim to promote knowledge and education links, and strengthen ties between Australia and our neighbours through undergraduate and postgraduate scholarships. These include development awards to build capacity in developing countries.

They also include achievement awards that target top students, researchers and professionals coming to Australia. These scholarships include a living allowance, tuition fees and return airfares, along with an establishment allowance to help students make the transition to South Australia.

✦ australiaawards.gov.au

Sponsored students

A sponsored student is someone who has all or part of their education costs paid by a third party, such as a foreign government, the Australian Government, a partner university or an employer.

With more than 500 sponsored students, we understand the unique needs of sponsors and students and have a range of resources to meet these including dedicated staff who work with sponsor bodies. Our international office is the central point of contact for sponsors and ensures applications are processed quickly and student orientation and support services are readily available after arrival.

We are committed to working with students and sponsors to achieve their goals and provide regular progress reports and advice to sponsors with students' permission.



Join our alumni community

When you graduate, we'll welcome you into our global alumni network.

The University has more than 190,000 alumni around the world, supported by five formal international alumni networks in Hong Kong, China, Singapore, Malaysia and the United Kingdom.

Each year thousands of graduates automatically become part of the University of South Australia's global alumni network which promotes strong links with business, government and the wider community, and supports and encourages interaction between graduates.

Membership is free, lifelong and worldwide. All you need to do is update your details when you graduate to start accessing the Network benefits.

Some of these include:

- > membership of the Alumni Network online community – **Global Connect**. Stay in touch with fellow graduates, become a mentor, view job opportunities and register for events across the University such as networking functions, art exhibitions, seminars, workshops and more;
- > **professional services** including career advice, gym membership at student prices, access to the legal advice clinic and health clinics;
- > **UniSA Library membership** including access to selected online journals.
- > access to the **Alumni Business Directory** – a space to promote your own business and find exclusive discounts offered by other Alumni;
- > discounted tickets to the **Adelaide Festivals**, including **WOMAdelaide**.

Check the Alumni website to read our newsletter and see all of the benefits.

▶ unisa.edu.au/alumni







Programs and application information

Programs for coursework students

UniSA Business School.....	30
Art, Architecture and Design.....	38
Education.....	42
Psychology, Social Work and Human Services.....	46
Health and Medical Sciences.....	48
Data and Information Management.....	52
Engineering.....	56
Natural and Built Environments.....	60
 A complete list of degrees and application information for coursework and research students.....	 64-80



University of
South Australia

Business
School



UniSA Business School

A top-ranked and
industry-engaged
Australian Business School.

With five stars awarded by QS, we sit within the top one per cent of Business Schools in the world. The UniSA Business School is one of only nine in Australia to be accredited by EQUIS – the EFMD Quality Improvement System. Our strong industry links give you real-life experience in the classroom, business mentoring and internship opportunities.

Programs in this area

Featured programs

- > Master of Finance with specialisations in:
Finance
Banking
- > Master of Human Resource Management
- > Master of International Business
- > Master of Management with specialisations in:
Management
Integrated Supply Chain Management
Tourism and Event Management
- > Master of Management (Arts and Cultural Management)
- > Master of Marketing
- > Master of Professional Accounting
- > Master of Business Administration with specialisations in:
Finance
Human Resource Management
Marketing
- > Masters by Research
- > Doctor of Philosophy

Find out more about the Business School at the University of South Australia online:

✦ UniSABusinessSchool.edu.au



Pathways into research

We offer pathways from our Master by coursework programs into Master by research programs. Applications will be considered on a case-by-case basis.

How our degrees are structured:

Core

The introductory courses to your program

If you have previously studied business you may either:

- > Receive advanced standing for these courses and complete your Masters in 1.5 years
- > Substitute other courses for these and retain a 2 year Masters duration

Specialisation

Courses specific to your study area

Electives

Courses that you choose

- > Industry placements
- > Courses from the Business School or another discipline

|..... 0.5 years

|..... 1.5 years

Investing in your success

At the UniSA Business School we take care of your social, academic and professional development. Your experience might include:

- > Connecting with fellow students as you learn to cook foods from around the world
- > Mentoring by a local business professional
- > Stepping into an Australian workplace for an internship

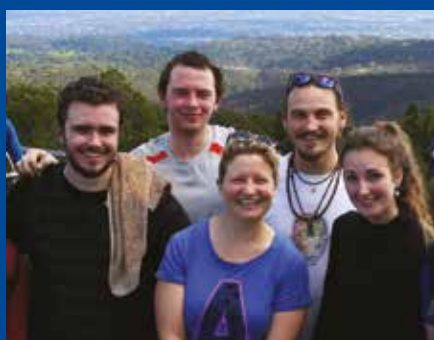
These opportunities are specifically funded and operated by the Business School.



FIVE STAR MBA

FOR EIGHT YEARS
IN A ROW

THE GOOD UNIVERSITIES
GUIDE, 2008-2015



Social

- > Business Mentors
- > Your Culture, My Culture
- > 'Spiced' cooking demonstrations



Academic

- > Peer Assisted Study Sessions (PASS)
- > Guest lectures
- > Active learning mode



Professional

- > Business soft skills courses
- > Networking sessions, site visits, role plays
- > Career mentoring
- > Placements in local/international companies

Master of Finance *DMFC*

Specialising in:

- > Finance
- > Banking



CRICOS code varies by specialisation
(see pages 69–71)

Fees* (indicative 2017) A\$31,700 pa

IELTS Total 6.5

IELTS Reading 6

IELTS Writing 6

Start date (SP=study period) SP2 SP5

** See pages 69–71 for details*

Key features

- > CFA recognition with scholarships available.
- > Industry placement (150 hours) with a local or international organisation as an elective.
- > Bloomberg data and specialist financial software used within the curriculum.
- > Optional specialisation in banking.

Overview

Our Master of Finance will provide you with the advanced skills and expertise to address global business challenges and further your career in the fast-developing finance sector. Incorporating real financial data into its curriculum, this program is informed by the most up-to-date industry standards and taught in state-of-the-art facilities. Its strong focus on experiential learning, team-based projects and research will prepare you for senior roles in a range of business settings.

Banking

Our Master of Finance (Banking) will equip you with the knowledge and expertise to apply key finance theory and practice to contemporary banking and financial institution management. The program compares mature and emerging banking systems. You will develop an understanding of the institutions and markets within which banking operates and how risk management is applied and analysed in the banking sector.

Research opportunities

In this program you will study two research-focused courses:

- > Research 1: worth 4.5 units and includes a research proposal of 3000 words.
- > Research 2: worth 4.5 units and includes a thesis of 7000 words.

Career opportunities

Some of the varied career paths this program will qualify you for include:

- > commercial and investment banking
- > corporate treasury
- > financial advisory or brokerage
- > foreign exchange
- > funds management
- > loans
- > mergers and acquisitions
- > policy or research
- > superannuation.

Entry requirements

A completed bachelor degree or higher in any discipline from a recognised higher education institution.

Professional Recognition

CFA: this program has been accepted into the Chartered Financial Analyst Institute University Recognition Program.

FIRST YEAR

Accounting for Management M
Commercial Law M
Corporate Finance
Economic Principles for Business

Financial Theory and Financial Markets
Statistics for Data Science
2 x Electives

FINANCE SPECIALISATION

SECOND YEAR

Advanced Corporate Finance
Investment Management
International Finance
Research 1

Behavioural Finance
The Econometrics of Financial Markets
Advanced Investment Management
Research 2

BANKING SPECIALISATION

SECOND YEAR

International Finance
Investment Management
Chinese Banking and Wealth Management
Research 1

Risk Management in Financial Institutions
Money, Banking and Financial Markets
Managing Financial Risk
Research 2



Master of Human Resource Management *DMHM*

CW 2*

CRICOS code	O81880C
Fees* (indicative 2017)	A\$31,700 pa
IELTS Total	6.5
IELTS Reading	6
IELTS Writing	6
Start date (SP=study period)	SP2 SP5

*See pages 69–71 for details

Key features

- > Teaching staff include many industry executives and members of the Centre for Human Resource Management.
- > Industry placement (150 hours) with a local or international organisation as an elective.
- > Pair up with a senior business executive through the Executive Partner Programme.

Overview

As one of the fastest growing occupations in Australia, effective Human Resource Management (HRM) practice requires expertise in the operation and management of business and people. This program will provide you with a comprehensive understanding of the broader business environment and the advanced knowledge and skills required for professional practice as a HRM specialist.

This program is also designed and taught by academics actively involved in industry collaborative research such as our Centre for Human Resource Management. Drawing on international research and professional experience both locally and abroad means our courses are relevant and applicable for today's environment.

Career opportunities

As a qualified practitioner, you will be well equipped to pursue senior roles in:

- > general management
- > human resources
- > industrial relations
- > management consulting
- > occupational health, safety and welfare
- > project and policy consultancy
- > staff training and development.

Entry requirements

A completed bachelor degree or higher in any discipline from a recognised higher education institution.

BUSINESS SCHOOL CORE

People, Organisations and Leadership
Global Business Environment

HUMAN RESOURCE MANAGEMENT CORE

Introduction to Human Resource Management
Workplace Learning and Development
Recruitment and Selection
Employment Law F
Australian Industrial Relations
Strategic Management of Human Resources
Managing the Global Workforce
Negotiation
Workplace Health and Safety Management
Managing Employee Performance and Rewards

RESEARCH CORE

Research for Business Decision Making
3 x Electives

Research opportunities

In this program you can study up to two research-focused courses:

- > Research for Business Decision Making: a compulsory course worth 4.5 units that includes a thesis of 5000 words.
- > Research Scholarship in Business: a course worth nine units that includes a thesis of 9000 words.

Master of International Business *DMIN*

CW 2*

CRICOS code	O81137A
Fees* (indicative 2017)	A\$31,700 pa
IELTS Total	6.5
IELTS Reading	6
IELTS Writing	6
Start date (SP=study period)	SP2 SP5

*See pages 69–71 for details

Key features

- > Industry placement (150 hours) with a local or international organisation as an elective.
- > Select one of five practice-based capstone experience courses and apply your knowledge to real-life business settings.

Overview

In today's climate it is essential to understand the dynamics of how economics and politics, and social and cultural issues impact on business operations internationally.

Designed in consultation with industry, this program will provide you with the advanced knowledge and skills to manage a business in a global environment. You will explore real-life case studies, learn through the experience of an internationally diverse group of students, and gain the expertise to address today's leading business challenges.

Career opportunities

This program will equip you for a managerial career in organisations ranging from:

- > consulting companies
- > foreign affairs departments
- > international trade organisations
- > multinational enterprises.

Entry requirements

A completed bachelor degree or higher in any discipline from a recognised higher education institution

Research opportunities

In this program you can study up to two research-focused courses:

- > Research for Business Decision Making: a compulsory course worth 4.5 units that includes a thesis of 5000 words.
- > Research Scholarship in Business: a course worth nine units that includes a thesis of 9000 words.

BUSINESS SCHOOL CORE

Global Business Environment
Marketing Management
People, Organisations and Leadership
Accounting for Management M

INTERNATIONAL BUSINESS CORE

Economic Principles for Business
Research for Business Decision Making
Managing Across Cultures
Global Supply Chain Management
Issues in International Trade
International Business Strategy
Managing the Global Workforce
Marketing Across Borders M
Principles of International Business
Finance
2 x Electives
Capstone Experience Course

Master of Management *DMME*

Specialising in:

- > Management
- > Integrated Supply Chain Management
- > Tourism and Event Management



CRICOS code varies by specialisation
(see pages 69–71)

Fees* (indicative 2017) A\$31,700 pa

IELTS Total 6.5

IELTS Reading 6

IELTS Writing 6

Start date (SP=study period) SP2 SP5

* See pages 69–71 for details

Key features

- > Optional specialisations in integrated supply chain management, tourism and event management.
- > Industry placement with a local or international organisation as an elective.
- > Pair up with a senior business executive through the Executive Partner Programme.

Overview

There are a myriad of challenges facing managers today such as globalisation, technology, the changing nature of society, and cultural and demographic issues. In order to compete and grow in a dynamic global business environment, it is vital that managers are equipped with leading-edge knowledge, methods and tools.

Management

This program will provide you with the advanced knowledge and skills to manage organisations and achieve business objectives in an efficient and effective manner. It will prepare you to be a leader and decision-maker, at the forefront of any business or organisation. You will gain an understanding of management systems, the tools to solve problems in our global economy and the expertise to pursue a management career in any business setting.

Integrated Supply Chain Management

This specialisation involves linking strategies and operations between organisations and customers across international borders. As supply chains lengthen and geographical locations broaden, skilled professionals are in high demand industry-wide. This program will provide you with specialist expertise to successfully deliver products and services to end users. You will also be able to engage with industry and apply your knowledge to areas such as operations management and global supply chain management.

Tourism and Event Management

This specialisation will qualify you for a professional career in a global and dynamic sector. It will provide you with advanced business and specialist management expertise to think strategically and respond to industry challenges on a local and international scale. You will also benefit from the strong working links our teaching staff have established with tourism and event groups and leading organisations. This close collaboration means that our program content is constantly tailored to suit the changing needs of industry.

Career opportunities

Some of the wide and varied career options graduates of this program can explore include:

- > **Management:** business manager, executive officer, public policy manager, general manager.
- > **Integrated Supply Chain Management:** logistics and distribution, purchasing, operations, transportation and materials management.
- > **Tourism and Event Management:** festivals and events, conferences, sport and recreation, entertainment services, hospitality and accommodation.

Entry requirements

A completed bachelor degree or higher in any discipline from a recognised higher education institution.

Professional recognition

SA Tourism Hall of Fame: the School of Management at the UniSA Business School has been recognised for its excellence in tourism and education and has been admitted into the South Australian Tourism Hall of Fame.

Research opportunities

In this program you can study up to two research-focused courses:

- > Research for Business Decision Making: a compulsory course worth 4.5 units that includes a thesis of 5000 words.
- > Research Scholarship in Business: a course worth nine units that includes a thesis of 9000 words.

BUSINESS SCHOOL CORE

People, Organisations and Leadership
Global Business Environment
Accounting for Management M
Marketing Management

RESEARCH CORE

Research for Business Decision Making
3 x Electives

MANAGEMENT

Managing Change
Workplace Learning and Development
Negotiation
Risk Management
Strategic Concepts
Integrated Management Project
Managing Business Ethics
Project Management for Business

INTEGRATED SUPPLY CHAIN MANAGEMENT

Global Supply Chain Management
Operations Management
Managing Sustainable Value Chains
Integrated Logistics Management
Negotiation
Project Management for Business
Integrated Management Project
Strategic Concepts

TOURISM AND EVENT MANAGEMENT

The Principles and Practice of Tourism
Sport, Tourism and Events
Festivals and Events
Tourism: Impacts and Sustainability
Meetings, Conventions and Exhibition Management
International Tourism: Predicting Markets and Opportunities
Strategic Concepts
Integrated Management Project

Master of Marketing *DMMR*

CW **2***

CRICOS code	O81138M
Fees* (indicative 2017)	A\$31,700 pa
IELTS Total	6.5
IELTS Reading	6
IELTS Writing	6
Start date (SP=study period)	SP2 SP5

* See pages 69–71 for details

Key features

- > Learn from marketing experts who advise the world's biggest brands.
- > Industry placement (150 hours) with a local or international organisation as an elective.
- > Be mentored by a marketing-specific industry professional.

Overview

This program bridges the gap between academic theory and practice-based knowledge to further develop your specialist expertise and advance your career in marketing. With a focus on enhancing skills that you can take straight into the workplace, you will be well equipped to assist in decision-making and strategy development at senior levels.

As part of your marketing studies, you will also have access to cutting-edge research from our world renowned Ehrenberg-Bass Institute for Marketing Science and learn from the same marketing experts who advise global brands such as Coca-Cola, Colgate-Palmolive and MasterCard.

Find out more about the Institute at MarketingScience.info

Career opportunities

This program will prepare you for senior roles such as:

- > brand/communications coordinator
- > brand/marketing manager
- > marketing director.

Entry requirements

A completed bachelor degree or higher in any discipline from a recognised higher education institution.

Professional recognition

Upon completion of our Master of Marketing, you may apply for membership to the Australian Marketing Institute (AMI).

BUSINESS SCHOOL CORE

Marketing Management
 Global Business Environment
 Accounting for Management M
 People, Organisations and Leadership
 Research for Business Decision Making

MARKETING CORE

Marketing Information and Analysis
 Influencing Consumer Behaviour
 Marketing Strategy and Planning

ELECTIVES

5 x Marketing Electives
 3 x Marketing or Business Electives

Research opportunities

In this program you can study up to two research-focused courses:

- > Research for Business Decision Making: a compulsory course worth 4.5 units that includes a thesis of 5000 words.
- > Research Scholarship in Business: a course worth nine units that includes a thesis of 9000 words.

Learn from the people who advise the world's biggest brands

Ehrenberg-Bass Institute for Marketing Science

Our in-house Ehrenberg-Bass Institute is the largest centre for research into marketing in the world. The Institute conducts research for global brands like Coca-Cola, Kellogg's and Mars.

▶ unisa.edu.au/marketresearch

What it means for you

As a marketing student you will benefit from world-class research and learn from the same marketing scientists that advise senior marketers and CEOs from all over the world.

▶ unisa.edu.au/biggestbrands



University of
South Australia

Ehrenberg-Bass
Institute for Marketing Science



A diverse career for CPA award-winner

May made the most of the networking opportunities offered during her time at the UniSA Business School.

'At the annual school prize night I met a CPA representative: During our conversation I got to know about a three-month internship opportunity with Deloitte, China. I applied and was accepted for the internship,' she said.

May excelled in the Chartered Accountant qualification, receiving the state's highest scores for CA Taxation and Financial Reporting.

She was offered a position with BDO Australia in Adelaide in the Corporate and International Tax department and is now working as a senior accountant with the firm.

'We have 150 people in our Adelaide office and my department provides tax advice to clients which include large and multi-national organisations.'

May Liu

Graduate, Professional Accounting

Master of Professional Accounting *DMPC*



CRICOS code	O82982M
Fees* (indicative 2017)	A\$31,700 pa
IELTS Total	6.5
IELTS Reading	6
IELTS Writing	6
Start date (SP=study period)	SP2 SP5

* See pages 69–71 for details

Key features

- > Full accreditation by Australian and international accounting bodies.
- > Be mentored by a practising accountant.
- > Undertake an accounting-specific industry placement (150 hours) as an elective.

Overview

Designed in consultation with industry, this program will provide you with the specialised knowledge and skills to practise as an accounting professional. You will develop analytical, business management and problem-solving skills, and an advanced understanding of accounting practice.

As the accounting profession continues to evolve, employers are increasingly looking for confident decision makers who excel in team situations and can demonstrate high-level communication skills. Upon completion, you will be equipped with this unique skill set and stand out from the crowd as a qualified professional.

Career opportunities

This program will qualify you for careers in:

- > auditing
- > business advisory
- > financial reporting
- > management accounting
- > tax.

Entry requirements

A completed bachelor degree or higher in any discipline from a recognised higher education institution.

INTRODUCTORY CORE COURSES

People, Organisations and Leadership
Marketing Management
Accounting for Management M
Economic Principles for Business

INTERMEDIATE CORE

Research for Business Decision Making

ACCOUNTING CORE

Information and Systems for Competitive Advantage M
Management Accounting M
Corporate Finance
Advanced Accounting
Commercial Law M
Auditing Principles
Contemporary Issues in Accounting M
Taxation
Financial Accounting
2 x Electives

Professional accreditation

CPA Australia: this program satisfies entry to CPA Australia's professional program (the CPA Program).

Chartered Accountants Australia and New Zealand: the program satisfies the educational requirements for entry to Chartered Accountants Australia and New Zealand's professional program (the Chartered Accountants Program).

Professional recognition ACCA: this program is recognised by the Association of Chartered Certified Accountants. On application you will receive maximum exemption and entry into the ACCA professional program.

Master of Management (Arts and Cultural Management) *DMMC*

CW 2*

CRICOS code	081136B
Fees* (indicative 2017)	A\$31,700 pa
IELTS Total	6.5
IELTS Reading	6
IELTS Writing	6
Start date (SP=study period)	SP2 SP5

* See pages 69–71 for details

Key features

- > Partnership with Adelaide Festival Centre through the Asia Pacific Centre for Arts and Cultural Leadership.
- > Pair up with a senior business executive through the Executive Partner Programme.
- > First program of its kind in Australia.

Overview

This program is the only qualification of its kind in South Australia, designed to provide you with advanced skills for a dynamic and creative industry. Whether you are an artist wishing to pursue a second career, or have an interest in management within the arts and cultural industry, this program will equip you with specialist and business expertise for a variety of professional roles.

Career opportunities

Upon completion, you will be well placed to pursue management roles in areas such as:

- > arts festivals and events
- > film and music
- > government (local, state or federal)
- > visual and performing arts.

Entry requirements

A completed bachelor degree or higher in any discipline from a recognised higher education institution.

Research opportunities

In this program you can study up to two research-focused courses:

- > Research for Business Decision Making: a compulsory course worth 4.5 units that includes a thesis of 5000 words.
- > Research Scholarship in Business: a course worth nine units that includes a thesis of 9000 words.

BUSINESS SCHOOL CORE

People, Organisations and Leadership
 Global Business Environment
 Accounting for Management M
 Marketing Management

ARTS AND CULTURAL MANAGEMENT CORE

Arts Environment
 Arts and Cultural Events Management
 Arts Management
 Arts Development
 Arts Law

PROGRAM CORE

Integrated Management Project
 Managing Across Cultures
 Strategic Concepts

RESEARCH CORE

Research for Business Decision Making
 3 x Electives

Master of Business Administration *DMMA*

CW 2

CRICOS code	048635B
Fees* (indicative 2017)	A\$35,300 pa
IELTS Total	6.5
IELTS Reading	6
IELTS Writing	6
Start date (SP=study period)	SP1 SP3 SP4 SP6

* See pages 69–71 for details

Key features

- > 5-star rating for eight years in a row.[^]
- > QS 5-stars for program strength.
- > Local industry placements and overseas intensive courses in China and Europe as electives.

[^] The Good Universities Guide, 2008-2015

Overview

Our 5-star MBA has been developed to provide you with the range of skills required to understand, analyse, integrate and improve activities associated with business and management. It has a sharp focus on the application of skills, and our lectures and facilities are designed to provide you with an environment where you can realise your full management potential.

Our MBA is offered in two flexible formats:

- > general management MBA (nine core courses plus three electives);
- > specialised MBA (eight core courses plus three specialisation courses and one elective).

MBA specialisations include:

- > finance
- > human resource management
- > marketing.

Career opportunities

Our program will equip you with the skills, knowledge and experience to perform as a better manager and fast-track your executive career in your current organisation or field.

GENERAL MANAGEMENT MBA

CORE COURSES

Strategy and Management Research
 Accounting for Decision Making
 Managerial Finance
 The Law for Managers
 Structure, People and Change
 International Business
 Strategic Marketing
 Ethics, Governance and Sustainability
 Responsible Leadership
 2 x Electives
 AND (choose one from the following three capstone courses)
 Strategic Research Project
 Business in China Study Tour
 International Study Tour

SPECIALISED MBA

CORE COURSES

Strategy and Management Research
 Accounting for Decision Making
 Managerial Finance
 Structure, People and Change
 The Law for Managers
 International Business
 Strategic Marketing
 Ethics, Governance and Sustainability
 Responsible Leadership
 2 x Specialisation Electives
 AND (choose one from the following three capstone courses)
 Strategic Research Project
 Business in China Study Tour
 International Study Tour

Entry requirements

Applicants of this program are required to have:

- > a minimum of three years management experience and a bachelor degree from a recognised university or equivalent professional qualifications; or
- > a minimum of seven years management experience and a relevant graduate certificate or graduate diploma in business administration; and
- > two referee reports and a detailed CV outlining management experience.



TOP 100 FOR Architecture

2015 QS World Ranking

AWARD- WINNING Design and Construct program

Art, Architecture and Design

Develop and enrich your creativity, research and innovation through intensive studio practice and unlimited access to custom-built workshops in your chosen specialisation.

As one of only two schools in Australia to combine art, architecture and design disciplines, we offer programs that continue to excel and excite, equipping our graduates with the skills, knowledge and networks to succeed professionally.

Programs in this area

Featured programs

- > Master of Design, with specialisations in:
 - Communication Design*
 - Design and Construct*
 - Industrial Design*
 - Interior Architecture*
 - Sustainable Design*
- > Master of Visual Art and Creative Practice
- > Master of Architecture

We also offer

- > Graduate Diploma in Design, with specialisations in:
 - Communication Design*
 - Design and Construct*
 - Industrial Design*
 - Interior Architecture*
 - Sustainable Design*
- > Graduate Diploma in Visual Art and Creative Practice

Find out more about art, architecture and design at the University of South Australia online:

👉 unisa.edu.au/art

👉 unisa.edu.au/architecture

👉 unisa.edu.au/design

Master of Design *DMSP*

Nested with:
 Graduate Diploma in Design **1**

CW 2

CRICOS code varies by specialisation (see pages 69–71)
Fees* (indicative 2017) A\$28,400 pa
IELTS Total 6.5
IELTS Reading 6
IELTS Writing 6
Start date (SP=study period) SP2 SP5

* See pages 69–71 for details

Key features

- > These dynamic programs will equip you with the creative, technical and professional skills to work as a graduate designer in a wide variety of fields.
- > Undertake a placement opportunity during the course of study.
- > Use world-class workshop facilities including laser cutters, a CNC router and 3D and large format printers.
- > Benefit from industry links including master classes and seminars from distinguished national and international practitioners.

Overview

These nested programs provide students with an advanced, comprehensive understanding of the changing contexts in which they are designing, as they develop the professional skills required to respond to contemporary issues in their chosen specialisation.

Specialisations include:

- > communication design
- > design and construct
- > industrial design
- > interior architecture
- > sustainable design.

The focus of these programs is on the Design Research Studio courses which allow students to undertake design studies via individual and interdisciplinary projects, internal consultancies and external projects.

Career opportunities

Design graduates from the University of South Australia are sought after throughout Australia and internationally and are employed in a wide range of areas such as:

- > advertising
- > consultancy
- > design and construction advisory
- > design studio
- > digital media design
- > graphic design
- > industrial design
- > interior architecture

FIRST YEAR

Design Research Studio 1
 Design Internship
 Elective

Design Research Studio 2
 AAD Research Methods
 Elective

SECOND YEAR (MASTERS STUDENTS ONLY)

Design Research Studio 3
 Masters Project Report 1
 Masters Elective

Design Research Studio 4
 Masters Project Report 2
 Masters Elective

- > manufacturing
- > project management
- > public relations and marketing organisations
- > sustainability management.

Scholarship

A Centre for English Language (CELUSA) scholarship is available to students applying for this program. Students who apply to study with CELUSA and meet all academic and other selection criteria, except the program's minimum English proficiency requirement, are eligible for reimbursement of 10 weeks of English training valued at approximately \$4200 AUD.

Entry requirements

Applicants must have completed a three-year bachelor degree from a recognised higher education institution, or equivalent, in a related discipline. Applicants must also submit a portfolio of work and statement of intent.

Applicants who have completed the Graduate Diploma in Design from the University of South Australia are eligible to apply and are not required to submit a portfolio of work and statement of intent.

Professional recognition

Graduates of these programs are eligible for Associate Membership of the Design Institute of Australia. Graduates are eligible for membership of the Design Institute of Australia after three years of professional practice.

Master of Visual Art and Creative Practice *DMVC*

Nested with:
 Graduate Diploma in Visual Art and Creative Practice **1**

CW 1.5

CRICOS code varies by specialisation (see pages 69–71)
Fees* (indicative 2017) A\$26,400 pa
IELTS Total 6.5
IELTS Reading 6
IELTS Writing 6
Start date (SP=study period) SP2 SP5

* See pages 69–71 for details

Key features

- > Participate in a mentorship scheme, undertake projects, and network with industry professionals.
- > Tailor the program to suit your professional needs, with business, financial management and marketing study options.
- > Focus on creative practice linked to conceptual, theoretical and studio-based research.

Overview

These unique nested programs allow you to build your creative practice in your chosen specialisation, as you work on innovative, contemporary, individual and collaborative studio practices within an academic context. You will develop important skills in business and financial management to ensure you can succeed in your chosen fields across visual arts and creative practice.

These fields include:

- > photo, digital and graphic media
- > curatorship and arts writing
- > painting and drawing
- > spatial studies involving public art, sculpture, textiles, glass, ceramics, jewellery and metal.

Career opportunities

Graduates work in environments such as design studios, advertising agencies, museums, publishing houses, public relations firms, television, new media and film production and more in exciting career areas such as:

- > artist
- > arts writer and critic
- > curator
- > designer
- > illustrator
- > jeweller
- > sculptor
- > studio practitioner
- > visual arts teacher.

FIRST YEAR

Design, Production, Presentation
 Business Practice for Artists and Designers
 Creative Research Studio 1
 Creative Research Studio 2

AAD Professional Management
 AAD Research Methods
 Creative Research Studio 3
 Creative Research Studio 4

SECOND YEAR

(Masters students only)
 Minor Thesis by Project A
 Minor Thesis by Project B

Scholarship

A Centre for English Language (CELUSA) scholarship is available to students applying for this program. Students who apply to study with CELUSA and meet all academic and other selection criteria, except the program's minimum English proficiency requirement, are eligible for reimbursement of 10 weeks of English training valued at approximately \$4200 AUD.

Entry requirements

Applicants must have completed a three year bachelor degree from a recognised higher education institution, or equivalent, in a related discipline. Applicants must also submit a portfolio of work and statement of intent.

Applicants who have completed the Graduate Diploma in Visual Art and Creative Practice or the Graduate Diploma in Visual Art and Design from the University of South Australia are eligible to apply and are not required to submit a portfolio of work and statement of intent.

Master of Architecture DMAE

CW 2

CRICOS code	O60208J
Fees* (indicative 2017)	A\$31,400 pa
IELTS Total	6.5
IELTS Reading	6
IELTS Writing	6
Start date (SP=study period)	SP2

* See pages 69–71 for details

Key features

- > Our facilities include world-class design studios, Australia's only Architecture Museum, and workshops utilising traditional and digital technologies.
- > Students gain practical skills with one of Australia's few design and construction studios.
- > Students can co-enrol in Master of Design programs focusing on Sustainable Design or Design and Construct.
- > Dedicated studio spaces for architecture students.

Overview

This program provides not only a focused and accredited education in architecture, but an understanding of the role of an architect in contemporary society. Students gain specific advanced knowledge and skills in construction systems, digital media, sustainable strategies, architectural practice and the historical and theoretical contexts which shape our built environment. The design of speculative, complex and experimental projects in studio is coupled with research and learning in the field.

In addition, the program has a strong practical and industry focus, with studio work, national and international field trips, online study, workshops and master classes.

Career opportunities

Architecture graduates from the University of South Australia are employed in a wide range of areas in positions such as:

- > architect
- > construction and project manager
- > furniture designer
- > heritage consultant
- > interior designer
- > multimedia designer
- > researcher and academic
- > urban designer.

Scholarship

A Centre for English Language (CELUSA) scholarship is available to students applying for this program. Students who apply to study with CELUSA and meet all academic and other selection criteria, except the program's minimum English proficiency requirement, are eligible for reimbursement of 10 weeks of English training valued at approximately \$4200 AUD.

Entry requirements

Entry into this program is competitive and based on academic merit.

Entry requires successful completion of the Bachelor of Architectural Studies at the University of South Australia or a bachelor degree in a three-year pre-professional architecture program from a recognised higher education institution or equivalent.

Alternative entry

The University may admit other applicants who provide satisfactory evidence of academic achievement which the University recognises as equivalent to a completed Bachelor of Architectural Studies.

Professional accreditation

This program is professionally accredited by the Architectural Practice Board of South Australia, endorsing the architecture qualifications of graduates required

FIRST YEAR

Architectural Design Studio 7 (Environment)
AAD Research Methods
Theories and History of Architecture
Architectural Design Studio 8 (Construction)
AAD Research Practices
Elective

SECOND YEAR

Architectural Design Studio 9
Architectural Practice Professional Elective
Architectural Design Studio 10
Architectural Practice Management
Elective

for registration as an architect. Accreditation demonstrates the achievement of relevant competencies from the AACA National Competency Standards in Architecture.

Professional recognition

The Australian Institute of Architects recognises the program, endorsing architecture qualifications required for membership of the AIA, including student and graduate membership. Recognition of the program demonstrates compliance with the Institute's Education Policy Performance Criteria.

Designing products for the world

Max believes the highlight of studying industrial design at the University of South Australia is the great facilities that he had at his fingertips. The workshop at the City West campus gives students the opportunity to complete models and prototypes to the highest standard.

He also worked with real clients, which gave him an understanding of how industrial design is undertaken in the real world and how to manage constraints and considerations outlined by clients and end users.

"Industrial design is an area I would recommend to others. You can make a real difference to people's lives and the environment," said Max.

Max Hughes

Master of Design (Industrial Design)





Creating and enhancing the future

"Having recently completed the Master of Architecture, I can recommend it to anyone wanting a challenging and very rewarding experience. What attracted me to the architecture program was the broad base from which a number of creative career paths could occur, and the opportunity for future flexibility within my work environment. The ability to have your own idea come to physical fruition and being able to create spaces that enhance people's quality of life is something that drives my passion for architecture," Damien said.

Damien Heffernan
Master of Architecture



South Australia's
LARGEST
tertiary school
of education

**WORLD
TOP 100**
in Education

QS Subject Rankings 2014

Education

The School of Education has a long and respected history of producing first-class teachers and leaders.

The School of Education offers you the opportunity to follow a career path leading to a highly satisfying and rewarding profession working with people who will inherit the future.

The University of South Australia offers a range of undergraduate and postgraduate programs in education, suitable for the whole life course from early childhood to adult education, each providing extensive hands-on experience to prepare and qualify graduates for a career in their chosen field of education.

Programs in this area

Featured programs

- > Master of Education (TESOL)
- > Master of Teaching (Early Childhood)
- > Master of Teaching (Primary)
- > Master of Teaching (Secondary)

Find out more about education at the University of South Australia online:

▶ unisa.edu.au/education

Master of Education (TESOL) MMTL

M 2

CRICOS code O82450F
 Fees* (indicative 2017) A\$25,400 pa
 IELTS Total 6.5
 IELTS Reading 6
 IELTS Writing 6
 Start date (SP=study period) SP2 SP5
 * See pages 69–71 for details

Key features

- > The School of Education was awarded five stars for excellence in the 2015 QS World University Rankings and ranked in the top 100 for Education.
- > Students will have the option to undertake either a classroom-based inquiry or a practical teaching placement.
- > Students also have the option to complete the program with either an education project or a research thesis.
- > We offer flexible learning with courses offered externally via online study and through on-campus intensive workshops.

Overview

The Master of Education (TESOL) is designed for those with an undergraduate qualification who would like to work in English as an Additional Language or Dialect (EALD) settings. The program will provide you with the opportunity to deepen specialised knowledge and explore a range of educational issues and contexts. You will further develop research skills and collaborate, network and interact with like-minded professionals.

Career opportunities

Graduates of the Master of Education (TESOL) may be employed to teach English in private language schools, bilingual education programs, new arrival support services and not-for-profit and government departments. Some of the exciting careers graduated can progress into include:

- > academic lecturers and researchers
- > work in community organisations
- > curriculum developers
- > English instructors from early childhood to adult education
- > government advisors
- > training and development consultants.

Entry requirements

Applicants must have completed a three-year bachelor degree (or equivalent) in any discipline from a recognised higher education institution.

Applicants who have completed a four-year bachelor degree in education, or a four-year bachelor degree with studies in educational methodology and curriculum (equivalent to 18 units), are eligible to enter the program with 0.5 EFTSL advanced standing and complete the program in 1.5 years of full-time study or equivalent part-time study.

Applicants who have completed a four-year bachelor degree in education with a major (six courses) in English language and/or linguistics and two years of teaching experience, or a four-year bachelor degree with studies in educational methodology and curriculum (equivalent to 18 units) as well as a major in English language and/or linguistics and two years of teaching experience, are eligible to enter the program with 1.0 EFTSL advanced standing and complete the program in one year of full-time study or equivalent part-time study.

From 2017, all students commencing pre-service teacher education programs will be required to successfully complete both literacy and numeracy tests prior to graduation, as required by the Commonwealth of Australia.

FIRST YEAR

Theorists and Theories of Learning and Development
 Learning Communities and Cultures
 Learning an Additional Language
 Language and Culture in TESOL

Teaching and Language Assessment in TESOL
 Curriculum and Evaluation in TESOL
 International and Comparative Studies in Education
 AND
 Evidence-Informed Practice in Education
 OR
 Research Methods and Issues in Education

SECOND YEAR

Language and Culture in TESOL
 Language Learning in TESOL: Learner Identity and Difference
 Research Methods and Issues in Education

OR
 Design for Education Thesis
 Critical Reflection on TESOL Practice
 TESOL Approaches and Strategies
 AND
 Project in Education
 OR
 Education Thesis A
 AND
 Education Thesis B

Helping others succeed

"The TESOL program at the University of South Australia is one of the best programs of its kind in an English-speaking country. Studying at the University gave me great experiences such as: a cooperative atmosphere, meeting smart and friendly people in Adelaide, great teaching methods, sophisticated facilities and fully-experienced teaching staff.

"Another big advantage is that it includes the appropriate courses that can be applied to my future career as an English teacher. Moreover, as an international student from Indonesia, I also have the Student Association to support my academic and social life in Adelaide. I strongly recommend that if you want to explore and expand your knowledge overseas – become one of the future University of South Australia students!" Nurul said.

Nurul Fadillah
 Master of Education (TESOL)



Master of Teaching (Early Childhood) *MMET*

M 2	
CRICOS code	077214E
Fees* (indicative 2017)	A\$26,400 pa
IELTS Total	7
IELTS Reading	7
IELTS Writing	7
IELTS Listening	7
IELTS Speaking	7
Start date (SP=study period)	SP2

* See pages 69–71 for details

Key features

- > Study with South Australia's largest School of Education with a long and respected history in teacher education.
- > International students are offered extra English language tuition prior to placements.
- > Undertake professional experience placements from your first semester.
- > Our teaching staff have worked with local, national and international professional bodies to develop local and global curriculum frameworks.

Overview

The Master of Teaching (Early Childhood) is designed for graduates from any discipline wanting to work as educators or teachers in early childhood education. You will develop an in-depth understanding of the underpinning principles and concepts of emotional, social, cognitive and physical development in early childhood, and apply your knowledge for curriculum planning for teaching learners aged from birth to eight years. You will be well prepared for the early childhood sector through a range of professional placements in childcare, preschool and primary school settings.

Career opportunities

Graduates are able to seek employment opportunities locally in childcare centres, and public and private schools. Some of the exciting careers graduates can progress into include:

- > childcare professional
- > children's services
- > junior primary school educator
- > preschool/kindergarten educator
- > private and public school settings
- > training officer.

Entry requirements

Applicants must have completed a three-year bachelor degree or an equivalent qualification from a recognised higher education institution. Selection is based on academic merit.

FIRST YEAR	
Professional Experience and Reflection 1: Introduction to Early Childhood Educators' Practices	
Social and Emotional Development M	
Developing a Play Curriculum M	
Development, Learning and Cognition M	
Professional Experience and Reflection 2: Early Childhood Educators' Work	
Arts Education M	
Inclusive Education M	
Contemporary Practice in Education Research	

SECOND YEAR	
English Education M	
Managing Learning Environments M	
Health and Physical Education M	
Humanities and Social Science Education M	
Science and Technology: Birth to Eight Years M	
Professional Experience and Reflection 3: Early Childhood Teacher as Inquirer	
Mathematics Education M	

Professional accreditation

This program has been approved by the Australian Children's Education and Care Quality Authority (ACECQA) as an Early Childhood Teaching Qualification for the purposes of the Education and Care Services National Law.

Professional recognition

Successful completion of this program provides a recognised academic qualification which will enable graduates to apply for teacher registration in South Australia, interstate and some overseas countries. Applicants should note there are other criteria determining eligibility for registration by the Teachers Registration Board of South Australia and other registration and regulatory authorities.

Master of Teaching (Primary) *MMET*

M 2	
CRICOS code	077215D
Fees* (indicative 2017)	A\$26,400 pa
IELTS Total	7
IELTS Reading	7
IELTS Writing	7
IELTS Listening	7
IELTS Speaking	7
Start date (SP=study period)	SP2

* See pages 69–71 for details

Key features

- > Professional experience placements from your first semester.
- > Flexible learning options including full-time, part-time or online study.

Overview

The Master of Teaching (Primary) is designed for graduates from any field seeking to work as educators in primary school settings. Students focus on children's learning and curriculum studies courses, examining the developmental, emotional and social psychological needs of learners, along with the specific learning areas of the primary school curriculum.

The primary specialisation includes core education studies, curriculum and pedagogy and professional experience placements in a range of settings from reception to year seven.

Career opportunities

Graduates of this program will be prepared for careers as primary school educators in private and public school settings.

Entry requirements

Applicants must have completed a three-year bachelor degree from a recognised higher education institution, or equivalent. Selection is based on academic merit.

Professional recognition

Successful completion of this program provides a recognised academic qualification which will enable graduates to apply for teacher registration in South Australia, interstate and some overseas countries. Applicants should note there are other criteria determining eligibility for registration by the Teachers Registration Board of South Australia and other registration and regulatory authorities.

FIRST YEAR	
Professional Experience and Reflection 1: Introduction to Educators' Practice	
Humanities and Social Sciences Education M	
Mathematics Education M	
Development, Learning and Cognition M	
Professional Experience and Reflection 2: Educator's Work	
Design and Technology Education M	
Education, Changes and Society M	
Contemporary Practice in Education Research	

SECOND YEAR	
Managing Learning Environments M	
English Education M	
Health and Physical Education M	
Science Education M	
Arts Education M	
Inclusive Education M	
Professional Experience and Reflection 3: Teacher as Inquirer	

Master of Teaching (Secondary) *MMET*

ML **2**

CRICOS codevaries by specialisation
 (see pages 69–71)
 Fees* (indicative 2017)A\$26,400 pa
 IELTS Total7
 IELTS Reading7
 IELTS Writing7
 IELTS Listening7
 IELTS Speaking7
 Start date (SP=study period)SP2 SP5
 * See pages 69–71 for details

Key features

- > Study with South Australia's largest School of Education with a long and respected history in teacher education.
- > International students are offered extra English language tuition prior to placements.
- > Undertake professional experience placements from your first semester.
- > Our teaching staff have worked with local, national and international professional bodies to develop local and global curriculum frameworks.

Overview

The Master of Teaching (Secondary) is designed for graduates from a range of specialist undergraduate degrees who want to work as secondary educators. You will specialise in two learning areas, based on your undergraduate studies, from the following curriculum areas: Arts (Dance, Drama, Music, Media Arts or Visual Arts), English, Mathematics, Health and Physical Education, Humanities and Social Sciences (History, Geography, Civics and Citizenship), Languages, and Science.

You will develop an understanding of the ethical and social contexts of education, the nature of learning and establishing a learning environment, how to deliver educational programs associated with a specific curriculum area, and planning for the diverse needs of adolescent learners. A range of professional experience placements in secondary schools from year eight to year 12 will prepare you for work as an educator.

Career opportunities

Graduates are able to seek employment opportunities locally in metropolitan and regional centres, nationally and internationally, in schools and related educational settings. Some of the exciting careers students can progress into include:

- > curriculum developer
- > secondary school educator.

FIRST YEAR

Professional Experience and Reflection 1: Introduction to Educators' Practices
 Development, Learning and Cognition M
 Discipline/Learning Area A1
 Discipline/Learning Area B1
 Professional Experience and Reflection 2: Educator's Work
 Discipline/Learning Area A2
 Discipline/Learning Area B2
 Contemporary Practice in Education Research

SECOND YEAR

Managing Learning Environments M
 Critical Perspectives on Curriculum, Pedagogy and Assessment
 Professional Experience and Reflection 3: Teacher as Inquirer
 Discipline/Learning Area A3
 Aboriginal Education, Culture, Curriculum and Change
 Professional Option
 Inclusive Education M

Entry requirements

Applicants must have completed a three-year bachelor degree or an equivalent qualification from a recognised higher education institution.

Additionally, applicants must have completed a major and a minor Learning Area in which they intend to specialise that aligns with the Australian National Curriculum. A major consists of a minimum of six courses (27 units) or equivalent with a minimum of two courses at Australian third-year undergraduate level or equivalent. A minor consists of a minimum of four courses (18 units) or equivalent with a minimum of two courses at Australian second-year undergraduate level or equivalent. Selection is based on academic merit.

Professional recognition

Successful completion of this program provides a recognised academic qualification which will enable graduates to apply for teacher registration in South Australia, interstate and some overseas countries. Applicants should note there are other criteria determining eligibility for registration by the Teachers Registration Board of South Australia and other registration and regulatory authorities.

IMPORTANT INFORMATION

Criminal history checks

Students will be required to undertake a criminal history screening through the Department of Communities and Social Inclusion (DCSI). The clearance will be valid for three years. This screening must be completed prior to being accepted for a placement and can take up to six to eight weeks to be processed. Strict confidentiality is maintained during the DCSI clearance process. If a student fails to obtain clearance for any reason, the University cannot accept responsibility for obtaining a professional experience placement or any other professional experience activity that a student may require to complete the course of study. If students cannot undertake a professional experience placement or any other professional experience activity which is a compulsory part of the program, they cannot graduate with an education degree from the University.

Mandatory training requirement

All education students enrolled in programs in the School of Education who are completing any in-school or site (ie preschools and childcare settings) observations, activities or professional experience placements, MUST undertake mandatory training in responding to Abuse and Neglect prior to the commencement of the activities or placements. In South Australia child protection legislation and policy require all organisations to establish and promote child safe environments. Mandatory reporting of child abuse and neglect training is required of all individuals working with children and young people. All students undertaking professional experience placements in South Australian government and non-government schools and preschools MUST provide documented evidence (ie a certificate) that shows they have completed all the required training from one of the providers mentioned on the following website. For more information visit: decd.sa.gov.au/docs/documents/1/CSEReptAbuseNegCse.pdf





PRACTISE
and perfect
your skills in our
state-of-the-art
SOCIAL WORK STUDIOS

LOCAL AND
International
field education
OPPORTUNITIES

Psychology, Social Work and Human Services

A unique meeting place of the social sciences, offering cross-disciplinary studies, accredited professional degrees and state-of-the-art facilities.

The School of Psychology, Social Work and Social Policy provides high-quality programs in psychology and social work, and prepares graduates for dynamic careers in a changing society. Students learn and practise their skills in custom-built, state-of-the-art facilities including two social work studios. Strong research credentials are a distinguishing feature of the School allowing students to be at the forefront of social research.

Programs in this area

Featured programs

- > Master of Social Work

Find out more about psychology, social work and social policy at the University of South Australia online:

👉 unisa.edu.au/psychology

👉 unisa.edu.au/socialwork

Master of Social Work *MMSK*

M 2 Q

CRICOS code 064242G
 Fees* (indicative 2017) A\$25,400 pa
 IELTS Total 6.5
 IELTS Reading 6
 IELTS Writing 6
 Start date (SP=study period) SP1
 * See pages 69–71 for details

Key features

- > In the 2015 Good Universities Guide, the University of South Australia recorded top ratings for Graduate Employment[†].
- > In 2015, the median starting salary for postgraduate social work graduates was AUD \$64,360[^].
- > Gain simulated hands-on experience in our safe and supportive social work studio.
- > Undertake field education opportunities in diverse settings locally and internationally.

[†]Australian Graduate Survey
[^]2015 Good Universities Guide

Overview

This program is designed for those graduates who want to develop their skills and knowledge to enter the social work profession.

Develop your understanding of social work values, ethics and identity with particular emphasis on human rights and current social issues. Our curriculum

particularly addresses mental health, Aboriginal and Torres Strait Islander cultures, child protection and cross cultural practice.

Our strong focus on contemporary issues, leadership and innovation is combined with practice-based learning, allowing our graduates to enter the work force with the skills and knowledge to make a difference.

Career opportunities

This degree prepares students for entry-level professional practice in social work. Some of the exciting careers students can progress into include:

- > aged care
- > child protection
- > correctional services
- > counselling
- > disability services
- > government and private sectors
- > health care
- > management
- > mental health
- > multicultural services
- > project management and evaluation
- > research
- > social administration
- > social planning
- > social work.

Entry requirements

A completed bachelor degree or postgraduate qualification in a related discipline (including, but not limited to, social science, psychology, politics, sociology, philosophy, international studies,

law, human services, nursing, education) at a recognised higher education institution or equivalent.

Applicants who have completed the Bachelor of Social Science (Human Services) (MBSS) degree or equivalent are eligible to enter the program with 0.5 EFTSL (usually six months full-time study) advanced standing and complete the program in 1.5 years of full-time study or part-time equivalent.

Professional accreditation

The program is accredited by the Australian Association of Social Workers (AASW) and graduates of this program are eligible for membership of the AASW.

Important Notice

Students will be required to undertake a screening and background check through the Department of Communities and Social Inclusion (DCSI). The screening must be completed prior to being accepted for a placement. In addition, students who are completing any site observations, activities or professional experience placements and social work with older people, vulnerable people or people with a disability, must undertake mandatory training in Child Safe Environments and Responding to Abuse and Neglect prior to the commencement of the activities or placements within the program.

FIRST YEAR
Effective Human Service Delivery Contemporary Practice Theories for Social Work Social Work Practice Skills Human Rights Based Practice and Community Development
Applied Practice Conference OR Social Work in the Australian Context Social Work Practicum 1
SECOND YEAR
Innovation and Research Innovative Social Work Practice with Children and Families Mental Health and Social Work Practice Social Work Elective
Leadership in Social Work Social Work Practicum 2

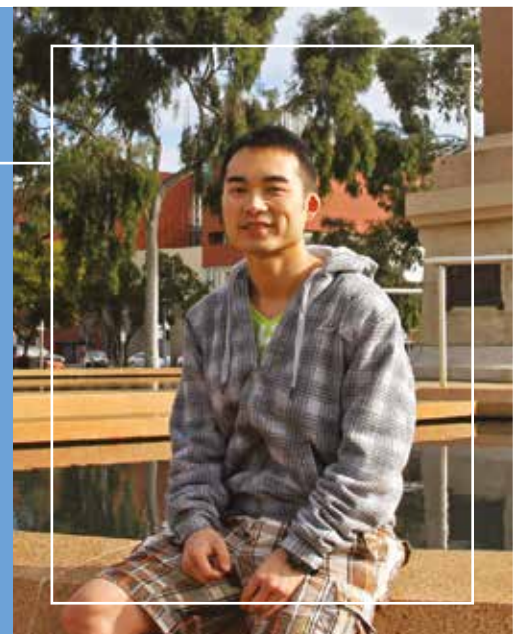
Making a difference

"The social work program provided me with a window into the cultures of Australian society, something that is interesting and challenging as a learning experience. Most importantly, I like the art of communication, and based on the program studies I aim to use my intervention and assessment knowledge to listen to the stories of my clients and help them face their issues positively, and with new thinking."

"The University of South Australia has provided many different, interesting experiences for both my program studies and my overseas life. From the perspective of a student, I'd say that UniSA is an international platform for student learning and growing, with innovation a major feature."

Bin Yi

Master of Social Work





One of Australia's
LARGEST
nursing
schools

HEALTH CLINICS
across two campuses
physiotherapy
DIETETICS

Health and Medical Sciences

Delivering a diverse range of postgraduate study options to grow your abilities and advance your career in health.

Health care workers are in demand around the world. No other vocation contributes more to the health and welfare of the community than those involved in delivering the science-based prevention, diagnosis and treatment of health problems.

Studying for a graduate certificate, graduate diploma or master degree is evidence of your commitment to your field and capacity to contribute to the needs of a global society.

Programs in this area

Featured programs

- > Master of Nursing
- > Master of Advanced Clinical Physiotherapy including streams in:
 - Musculoskeletal*
 - Sports*
 - Advanced Clinical Physiotherapy (tailored)*
- > Master of Clinical Pharmacy
- > Master of Medical Sonography
- > Master of Research (Population Health Practice)

We also offer

- > Postgraduate degrees in disciplines such as:
 - Occupational Therapy*
 - Nursing and Midwifery*

Find out more about health and medical sciences at the University of South Australia online:

👉 unisa.edu.au/nursing-midwifery

👉 unisa.edu.au/pharmacy

👉 unisa.edu.au/rehabilitation-health-sport

👉 unisa.edu.au/medical-radiation

Master of Nursing *IMNI*

CE 2

CRICOS code	O46395G
Fees* (indicative 2017)	A\$28,400 pa
IELTS Total	6.5
IELTS Reading	6.5
IELTS Writing	6.5
IELTS Listening	6.5
IELTS Speaking	6.5
Start date (SP=study period)	SP2

* See pages 69–71 for details

Key features

- > Gain an advanced qualification relevant to your professional field of practice.
- > Progress your knowledge and application of evidence-based practice.
- > Develop your ability to independently undertake research.

Overview

The Master of Nursing provides registered nurses with an advanced postgraduate qualification that opens up senior roles across policy, clinical practice, research, education or management. You will advance your knowledge and application of evidence-based practice, grow your understanding of professional issues and develop your ability to independently undertake research.

This program is designed to develop your ability to expertly apply modes of inquiry to identify and investigate questions, issues or problems to inform nursing and health care practice, knowledge and research.

Graduates may wish to pursue further study in research or apply their advanced skills to the increasingly complex health care environment.

FIRST YEAR

Critical Perspectives on Nursing and Health Services
 Research for Advancing Nursing and Health Care
 Nursing or Midwifery Minor Thesis 1
 Qualitative Design for Nursing and Health Research
 Quantitative Design for Nursing and Health Research

SECOND YEAR

Nursing or Midwifery Minor Thesis 2
 Leadership and Management in Nursing and Health Contexts

Career opportunities

Graduates are well positioned to further their career, equipped with the necessary skill set to take on leadership and governance opportunities in the workplace.

Entry requirements

This program has academic entry requirements and registration criteria. Please visit programs.unisa.edu.au and search for IMNI to find out more.

Master of Clinical Pharmacy *IMCM*

CE 1.5

CRICOS code	N/A
Fees* (indicative 2017)	A\$30,400 pa
IELTS Total	7
IELTS Reading	7
IELTS Writing	7
Start date (SP=study period)	SP2 SP5

* See pages 69–71 for details

Key features

- > Tailor the program to meet your professional needs.
- > Upon completing the master, you may choose to apply to undertake a PhD.
- > Available part-time (estimated completion time: three years).

Overview

Pharmacy practice in Australia is constantly changing and the ability to adapt to these changes is important for both professional development and job satisfaction.

The Master of Clinical Pharmacy is designed to improve and extend the skills of qualified pharmacists. The program trains clinical pharmacists capable of providing specialist pharmaceutical services in hospitals and other clinical environments, and can also prepare graduates to take on expanded roles in community pharmacy practice.

You will be able to take a leading role in the decision-making process of drug product selection for individual patients, provide specialist drug information and education programs to patients and health care providers, effectively monitor a patient's therapy and critically evaluate clinical research.

FIRST YEAR

Applied Clinical Pharmacy
 Introductory Epidemiology
 Advanced Pharmacotherapeutics (Mental Health)
 Advanced Pharmacotherapeutics (Diabetes)
 Advanced Pharmacotherapeutics 1
 Advanced Pharmacotherapeutics 2
 Advanced Pharmacotherapeutics 3A
 Research Methods and Biostatistics

SECOND YEAR

Medicine Management Clerkship
 Clinical Pharmacy Research Project

Students who have completed the Graduate Certificate in Pharmacy Practice will receive full credit for their previous study and will only need to complete an additional 36 units to obtain a master award.

Career opportunities

Graduates will be able to:

- > take a leading role in the decision-making process of drug selection for individual patients
- > provide specialist drug information and education programs to patients and health care providers
- > effectively monitor drug therapy
- > conduct and evaluate clinical research
- > pursue wider roles in research, industry and academia.

Entry requirements

This program has academic entry requirements. Please visit programs.unisa.edu.au and search for IMCM to find out more.



Advance your career in physiotherapy

“Postgraduate clinical education is the optimal way to develop the advanced clinical knowledge and skills essential to expert clinical practice.”

“The University of South Australia has a long history of providing excellent postgraduate physiotherapy education in both musculoskeletal and sports physiotherapy, with our graduates taking leading roles in diverse areas of practice including private practice, hospitals, emergency departments, sporting teams and academia. Graduates testify that their advanced knowledge and expertise has created new opportunities, enhanced their patient outcomes and increased their personal work satisfaction.”

“The Master of Advanced Clinical Physiotherapy builds on this rich history by creating new opportunities for postgraduate study in additional areas of practice.”

Mark Jones

Program Director, Master of Advanced Clinical Physiotherapy

Master of Advanced Clinical Physiotherapy *IMAP*

Streams in:

- > Musculoskeletal
- > Sports
- > Advanced Clinical Physiotherapy (tailored)

CE 2

CRICOS code varies by specialisation (see pages 69–71)
Fees* (indicative 2017) A\$36,400 pa
IELTS Total 7
IELTS Reading 7
IELTS Writing 7
IELTS Listening 7
IELTS Speaking 7
Start date (SP=study period) SP2

* See pages 69–71 for details

INDICATIVE FOR
MUSCULOSKELETAL STREAM

FIRST YEAR

Allied Health Evidence Based Practice 1
Musculoskeletal Physiotherapy Theory and Practice 1
Musculoskeletal Physiotherapy Theory and Practice 2
Pain Mechanisms
Pain Assessment, Rehabilitation and Management
Allied Health Evidence Based Practice 2
Advanced Physiotherapy Clinical Studies 1
Advanced Physiotherapy Clinical Studies 2

Key features

- > A blend of internal and external study, with on-campus practical and clinical teaching.
- > Learn from experienced, internationally-renowned teaching staff and clinicians.
- > Specialist courses in advanced pain mechanisms, pain assessment, rehabilitation and management.

Overview

Contemporary health care and clinical practice require therapists' reasoning and practice to be critical, reflective, patient centred and evidence based. This coursework master degree meets the advanced learning needs and goals of qualified physiotherapists and is available in three study streams. All streams are delivered through internal and external study over one year full-time.

Musculoskeletal

Develop advanced competencies in musculoskeletal physiotherapy clinical practice through student-centred practical and clinical sessions. Graduates work in clinical practice, and in screening clinics and emergency departments, and academia.

Sports

Develop advanced musculoskeletal competencies essential to sports physiotherapy with additional sports-specific theory and practice. Many of our sports qualified graduates work at amateur, elite, national and international levels in a wide range of sports.

Advanced Clinical Physiotherapy (individually-tailored stream)

Develop contemporary knowledge and advanced skills in a tailored physiotherapy area of your choice including paediatrics, neuro rehabilitation, cardiorespiratory, women's health, gerontology, and occupational health physiotherapy.

Career opportunities

This program will provide you with the specialist knowledge and skills to apply an advanced level of clinical practice to your role as a physiotherapy professional.

Entry requirements

This program has academic entry requirements and registration criteria. Please visit programs.unisa.edu.au and search for IMAP to find out more.

Link to industry bodies

Each master stream has been developed to meet the competency requirements of the national special groups of the Australian Physiotherapy Association (APA), and in turn, the College of Physiotherapists. Our musculoskeletal stream has also been developed to meet the competency requirements of the International Federation of Orthopaedic Manipulative Physical Therapists.

Domestic graduates of this program are eligible to apply for APA titled membership.

Master of Medical Sonography *IMSO*

Nested with:
 Graduate Diploma in Medical Sonography

CE 1.5

CRICOS code	N/A
Fees* (indicative 2017)	A\$26,400 pa
IELTS Total	7
IELTS Reading	7
IELTS Writing	7
IELTS Listening	7
IELTS Speaking	7
Start date (SP=study period)	SP2 SP5

* See pages 69–71 for details

Key features

- > Pursue either a project or research pathway.
- > Gain an in-demand qualification in a rapidly growing field.
- > Enjoy a flexible external learning environment.
- > Available part-time, external only (estimated completion time: three years).

Overview

Add another dimension to your career with a postgraduate qualification in sonography. Sonographers require highly developed technical skills and a strong understanding of health science, physics, anatomy and pathology for examination of body parts such as internal organs, blood vessels, the heart and reproductive organs. This program provides medical radiation and other health professionals with the mechanism to develop a new professional area in medical sonography and potentially undertake further research in this specialist field. The research pathway ensures you are eligible to apply for a PhD admission, while the project pathway focuses on developing advanced skills in speciality areas such as fetal echocardiography or advanced musculoskeletal sonography.

Complementing a supervised external training position, the program broadens career opportunities by extending theoretical knowledge, practical competency and understanding of ultrasound imaging health trends.

Career opportunities

Graduates may find employment as general or specialist sonographers, or find roles in:

- > government advisories
- > medical imaging department management.

FIRST YEAR

Ultrasound Physics and Instrumentation
 Professional Issues for Sonographers
 Abdominal Sonography
 Superficial Parts Sonography

SECOND YEAR

Obstetric and Gynaecologic Sonography
 Vascular Sonography
 Musculoskeletal Sonography
 Clinical Sonography Portfolio

THIRD YEAR

RESEARCH PATHWAY

Qualitative Design for Nursing and Health Research
 OR
 Quantitative Design for Nursing and Health Research
 AND
 Minor Thesis 1
 Health Science Minor Thesis 2

PROJECT PATHWAY

Qualitative Design for Nursing and Health Research
 OR
 Quantitative Design for Nursing and Health Research
 Plus 13.5 units of electives chosen from the following:
 Fetal Echocardiography
 Advanced Musculoskeletal Sonography
 Health Ethics
 Research for Advancing Nursing and Health Care
 Health Science Advanced Skill Project
 Health Science Advanced or Extended Practice Report

Entry requirements

This program has academic entry requirements. Please visit programs.unisa.edu.au and search for IMSO to find out more.

Professional accreditation

Graduates of the program are eligible to apply for full professional accreditation from the Australian Sonographer Accreditation Registry (ASAR) under the General Sonography category. Evidence of scanning experience in an Australian or New Zealand clinical setting is required for such accreditation.

Master of Research (Population Health Practice) *IMPU*

CE 2

CRICOS code	O8475OM
Fees* (indicative 2017)	A\$31,400 pa

* See pages 69–71 for details

Research entry requirements apply to this program. Please see pages 72–77 for more information.

Key features

- > Innovative combination of coursework and research.
- > Mentorship provided by active researchers collaborating with industry partners.
- > Exciting opportunities to present research in the public arena.

Overview

This innovative program has been designed to facilitate broad, industry-based research training.

Depending upon your research program, you will be based within one of the School of Health Sciences' research concentrations where you will work alongside active researchers in world-class facilities.

Completing coursework that develops a critical and practical understanding of research principles, methods, data acquisition and analysis, you will work alongside experienced researchers to develop, undertake and complete a program of original research.

With an emphasis on industry collaboration and authentic enquiry-based learning, you will develop the research knowledge and skills necessary to join, participate and contribute to research and the wider community.

The program also offers opportunities to be mentored and to disseminate and present your research to diverse audiences through publication and presentation at conferences. In addition, exposure to active researchers involved in the development and evaluation of population/public health initiatives and data custodians who routinely work with large state, national and international databases, provides graduates with excellent career prospects.

Research concentrations

Research concentrations within the School of Health Sciences include:

- > Centre for Population Health Research (CPHR) based at the iconic South Australian Health and Medical Research Institute (SAHMRI)
- > Alliance for Research in Exercise, Nutrition and Activity (ARENA)
- > International Centre for Allied Health Evidence (iCAHE)
- > Body in Mind (BIM).

Entry requirements

This program has academic entry requirements. Please visit programs.unisa.edu.au and search for IMPU to find out more.



\$190,000p/a
average salary
social media
DATA SCIENTISTS

*2014 Institute of Analytics
Professionals of Australia
Skills and Salary Survey*

THE ONLY
Master of
INFORMATION
MANAGEMENT
program of its kind
in South Australia

Data and Information Management

Our industry and research experts are at the forefront of the digital frontier. Our graduates connect digital resources from all around the world to better inform data decisions.

Become an expert in data and IT with a postgraduate qualification from the University of South Australia. Offering industry-informed expertise, our programs meet the demand for data-driven skills through online and on-campus study options.

Host to the national headquarters of the \$88 million Data to Decisions Cooperative Research Centre, the University is at the forefront of industry and research collaboration, delivering innovative and high-impact solutions that benefit many sectors across Australia.

Programs in this area

Featured programs

- > Master of Information Technology with specialisations in:
Business Information Systems
Enterprise Management
- > Master of Data Science
- > Master of Information Management with specialisations in:
Library and Information Management
Archives and Record Management

We also offer

- > Graduate Diploma in Information Technology with specialisation in:
Enterprise Management
- > Graduate Certificate in Information Technology
- > Graduate Diploma in Data Science
- > Graduate Certificate in Data Science
- > Graduate Diploma in Information Management with specialisations in:
Library and Information Management
Archives and Record Management
- > Graduate Certificate in Information Management

Find out more about data and information management the University of South Australia online:

▶ unisa.edu.au/it

Master of Information Technology *LMIG*

Specialisations in:

- > Business Information Systems
- > Enterprise Management

Nested with:

- Graduate Diploma in Information Technology (Enterprise Management) (LGIG) **1**
- Graduate Certificate in Information Technology (LCIG) **0.5**

ML **2**

CRICOS codevaries by specialisation
 (see pages 69–71)

Fees* (indicative 2017)	A\$29,400 pa
IELTS Total	6.5
IELTS Reading	6
IELTS Writing	6
IELTS Listening	6
IELTS Speaking	6
Start date (SP=study period)	SP2 SP5

* See pages 69–71 for details

Key features

- > Flexible delivery options including online and face-to-face learning.
- > Progress easily from graduate certificate, into the graduate diploma or master levels.
- > Learn how to manage complex information systems projects in real-world organisational settings.

Overview

Organisations are increasingly reliant on digital capabilities. Those that capitalise on IT trends such as virtualisation, cloud computing and data analytics are able to maximise business value by streamlining operations, innovating and transforming business models and relationships.

This program prepares the next generation of IT managers to keep pace with IT developments, while supporting day-to-day operational management.

Effective enterprise management enables businesses to navigate through this ever changing environment, positioning them well to take advantage of potential opportunities by aligning IT with core business processes and practices.

Enterprise Management

Enterprise management offers an innovative cross-disciplinary structure, with courses in the disciplines of IT, information systems and management, and a range of electives allowing you to develop skills and expertise in an area of your choice. You will also gain valuable practical experience through a capstone industry project in the final year. Enterprise management gives graduates from IT and non-IT backgrounds the knowledge and skills required for managing IT systems across a range of enterprises.

Business Information Systems*

Business information systems includes three industry placements, through which students develop an industry desired range of skills to bridge the gap between management and IT through planning, designing and implementing business information systems.

**There is no direct entry into this specialisation. Students can apply to transfer into it via a competitive selection process at the end of the first study period.*

Career opportunities

This program provides a pathway into IT careers for graduates not already working in this field, and career advancement for IT professionals who are looking to further their careers by progressing into management roles.

Entry requirements

Direct entry is only available into the enterprise management specialisation of the program and applicants are required to have:

- > a completed bachelor degree in any discipline from a recognised higher education institution or equivalent; or
- > a graduate diploma in information technology or equivalent from a recognised higher education institution; or
- > a graduate certificate in information technology or equivalent from a recognised higher education institution. Applicants who do not meet the above requirements may be eligible to enter the Graduate Certificate in Information Technology based on an appropriate amount of professional experience.

Students seeking entry into the business information systems specialisation may apply for transfer into the program following the completion of the first study period. Note that transfer is a competitive process and will depend on:

- > successful completion of the first study period with a credit average;
- > submission and review of a formal application; and
- > selection at an interview, with a panel including academic, industry and student representatives.

INDICATIVE FOR ENTERPRISE MANAGEMENT SPECIALISATION

FIRST YEAR

Enterprise Architecture
 Information Systems M
 Information Technology Project Management M
 IT Stakeholder Engagement

Business Intelligence and Data Analytics
 Enterprise Data Management
 Elective 1
 Elective 2

SECOND YEAR

IT Procurement and Vendor Management
 Organisational Transformation and Business Process Modelling
 Research Methods
 Elective 3

Information Governance
 Professional Project
 Strategic Information Systems M

Master of Data Science *LMDS*

Nested with:

- Graduate Diploma in Data Science (LGDS) **1**
- Graduate Certificate in Data Science (LCDS) **0.5**

ML 2

CRICOS code	varies by program (see pages 69–71)
Fees* (indicative 2017)	A\$31,500 pa
IELTS Total	6.5
IELTS Reading	6
IELTS Writing	6
Start date (SP=study period)	SP2 SP5

* See pages 69–71 for details

Key features

- > Online or face-to-face.
- > Designed in conjunction with industry including the Institute of Analytics Professionals of Australia and SAS. Students may receive SAS certification upon completion of certain subjects.

Overview

The volume of data generated by mobile phones, social media, online searches, sensor technologies and machine-to-machine transactions has given rise to the revolutionary area of big data and the emergence of an exciting new profession: data scientist.

A recent McKinsey Global Institute report demonstrates the shortage of data scientists, projecting a 50 per cent gap between projected demand and supply by 2018, so the demand for professionals with strong data management and analytic skills is expected to soar.

This program is offered in the form of a nested suite of three programs at postgraduate level (graduate certificate, graduate diploma and master). Each qualification extends to the next, allowing you to easily transition to a master level qualification.

Career opportunities

This program will enable you to analyse and visualise rich data sources from a wide range of business and organisational processes in order to analyse trends, uncover insights or generate new strategies. Graduates have access to career opportunities in various fields within the private sector, government and non-profit organisations.

SEMESTER 1

Big Data Basics
Statistical Programming for Data Science
Two of the following four courses:
Statistics for Data Science
Probabilities and Data
Relational Databases and Warehouses
Business Intelligence and Analytics

SEMESTER 2

Predictive Analytics
Unsupervised Methods in Analytics
Data Science Professional Development 1

SEMESTER 3

Social Media Data Analytics
Customer Analytics in Large Organisations
Data Science Professional Development 2

SEMESTER 4

Advanced Analytic Techniques 1
Advanced Analytic Techniques 2
Data Science Capstone Project

Entry requirements

Applicants to the Master of Data Science will normally have:

- > a bachelor degree in information technology; or
- > a bachelor degree in mathematics; or
- > a Graduate Certificate in Data Science; or
- > a Graduate Diploma in Data Science.

Applicants with bachelor degrees from other fields and at least one year of relevant work experience may be eligible for entry into the Graduate Certificate in Data Science and will be considered on a case by case basis.

Master of Information Management *DMIL*

Specialisations in:

- > Library and Information Management
- > Archives and Record Management

Nested with:

- Graduate Diploma in Information Management (DGIL) **1**
- Graduate Certificate in Information Management (DCIL) **0.5**

CW 2

CRICOS code	varies by specialisation (see pages 69–71)
Fees* (indicative 2017)	A\$29,400 pa
IELTS Total	6.5
IELTS Reading	6
IELTS Writing	6
Start date (SP=study period)	SP2 SP5

* See pages 69–71 for details

Key features

- > The only program of its kind in South Australia, with study available online or on campus.
- > Highly practical program with opportunities to progress into a PhD.
- > Experiential learning through a practical field work project and four week placement.

Overview

Accredited by the Australian Library and Information Association, this program offers you a learning environment informed by current professional practice.

The program incorporates the option to complete a minor thesis on a topic of choice. With successful completion of this program students may be eligible to apply for a PhD. This program is also offered in the form of a nested suite of three programs at postgraduate level (graduate certificate, graduate diploma and master). Each qualification extends to the next, allowing you to easily transition to a master-level qualification.

Library and Information Management

This specialisation integrates the knowledge and practical skills required for careers as librarians, and knowledge and information management officers.

Archives and Record Management

This specialisation integrates the knowledge and practical skills required for careers such as records managers, preservation managers and archivists as well as knowledge and information management officers.

INDICATIVE FOR LIBRARY AND INFORMATION MANAGEMENT SPECIALISATION

FIRST YEAR

Accessing Resources
Technological Foundations
Organising Resources
Information Management Foundations
Information Management Project
Managing Collections
Information Management Experience Reports
Information Management Professional Practice
Elective

SECOND YEAR WITH MINOR THESIS

Elective 1
Research Methods
ITMS Masters Minor Thesis 1
Systems and Metadata Analysis OR
Reading and Readers' Advisory
Elective 2
ITMS Masters Minor Thesis 2

Career opportunities

Depending on the specialisation, you may find employment in positions such as:

- > archivist
- > librarian
- > preservation manager
- > records manager.

Your cross-disciplinary skills will translate well within a number of industries including:

- > business
- > education
- > government agencies
- > health sciences
- > law.

Entry requirements

Applicants are required to have:

- > a bachelor degree in any discipline from a recognised higher education institution; or
- > a completed graduate diploma in information management; or

Applicants who do not meet the above requirements may be eligible to enter the Graduate Certificate in Information Management based on an appropriate amount of professional experience.



Improving information services

"I'm researching information behaviour with a focus on public library services for specific immigrants from countries such as India, China, Vietnam, Philippines and Malaysia. I'd like to seek out why they do or don't need services and make improvements."

"In March I was able to travel to Berlin to present my paper with my early findings at a highly reputable conference where my paper was published! This event was very rewarding as it gave me the opportunity to travel and meet some inspiring academics."

Safirotu Khoir

Library and Information Management



**Advanced
Manufacturing**
TWO CRCs worth
\$167m

New multimillion
DOLLAR
Future
Industries
Institute (FI)

Engineering

As a world leader in engineering excellence, our research and academic experts can help advance your engineering career with industry informed teaching and professional practice.

The University of South Australia offers master of engineering programs across the civil, electrical, management, mechanical, systems engineering and telecommunications disciplines to enhance your expertise and career opportunities.

Programs in this area

Featured programs

- > Master of Engineering with specialisations in:
Autonomous Systems
Engineering Management
- > Master of Engineering with specialisations in:
Civil and Infrastructure
Transport
Water Resources Management
- > Master of Engineering with specialisations in:
Electrical Power
Telecommunications

We also offer

- > Graduate Diploma in Engineering with specialisations in:
Autonomous Systems
Engineering Management
- > Graduate Diploma in Human Factors and Safety Management Systems
- > Graduate Diploma in Occupational Health and Safety Management
- > Graduate Certificate in Human Factors and Safety Management Systems
- > Graduate Certificate in Occupational Health and Safety Management

Find out more about engineering at the University of South Australia online:

▶ unisa.edu.au/engineering

Master of Engineering *LMEB*

Specialisations in:

- > Autonomous Systems
- > Engineering Management

Nested with:

- Graduate Diploma in Engineering (Autonomous Systems) (LGEB) **1**
- Graduate Diploma in Engineering (Engineering Management) (LGEB) **1**

ML **2**

CRICOS codevaries by specialisation
 (see pages 69–71)
 Fees* (indicative 2017)A\$33,400 pa
 IELTS Total6.5
 IELTS Reading6
 IELTS Writing6
 Start date (SP=study period)SP2 SP5
 * See pages 69–71 for details

Key features

- > Includes a practical, industry-relevant project in final year.
- > Infused with the latest industry practices and research in the field.
- > Opportunity to undertake thesis or research project in your area of interest.

Overview

Offering two specialisations, the Master of Engineering provides you with the opportunity to gain expertise in the area of autonomous systems or engineering management. Offered in the form of a nested suite of two programs at postgraduate level (graduate diploma and master), each qualification extends to the next, allowing you to easily transition to a master level qualification.

Autonomous Systems

Autonomous systems are a fusion of engineering systems, computational intelligence, sensing and communication software to create intelligent systems capable of interacting with the complexities of the real world.

This specialisation blends the disciplines of mechanical, electrical, computing and systems engineering. It is distinguished by its focus on systems integration, outdoor fieldwork and real-world application of the systems.

Engineering Management

You will gain knowledge and skills to develop a career in operations management, total quality management, supply chain management, enterprise resource planning, automation or project management.

Career opportunities

Autonomous systems graduates can undertake various roles involving the development, acquisition, management or research of intelligent autonomous systems in sectors such as:

- > aerospace
- > automotive
- > construction
- > consumer electronics
- > defence
- > energy
- > information technology
- > health care
- > mining.

Engineering management graduates can pursue opportunities such as:

- > energy manager
- > engineering business development manager
- > engineering department manager
- > factory operation manager
- > project manager
- > quality assurance manager.

Entry requirements

Applicants are required to have:

- > a completed bachelor degree in engineering, science or technology from a recognised higher education institution; or
- > a graduate certificate or graduate diploma in engineering from a recognised higher education institution.

Applicants with an Honours bachelor degree in an appropriate discipline may be eligible for some credit in line with University policy.

INDICATIVE FOR AUTONOMOUS SYSTEMS SPECIALISATION

FIRST YEAR

Control Systems M
 Autonomous Mechatronic Systems
 Engineering Research Practice
 Digital Signal Processing

Four courses from this list:
 Advanced Control
 Industrial Actuation and Automation
 Machine Vision Systems
 Principles of Systems Engineering
 Robotics and Automation

SECOND YEAR

Project Planning and Formulation
 Project Methodologies
 Autonomous Systems Minor Thesis OR
 Autonomous Systems Minor Thesis A
 Autonomous Systems Minor Thesis B

INDICATIVE FOR ENGINEERING MANAGEMENT SPECIALISATION

FIRST YEAR

Professional Engineering Practice E
 Elective
 Elective
 Elective

Engineering Research Practice
 Elective
 Elective
 Elective

SECOND YEAR

Engineering Economic Analysis
 Enterprise Resource Planning
 Lean Six Sigma
 Engineering Research Project 1
 OR
 Minor Thesis 1 (Eng)
 Supply Chain Management G
 Operations Management Systems
 Engineering Research Project II
 OR
 Minor Thesis 2 (Eng)

ELECTIVES

Total Quality Management
 Robotics and Automation
 Energy and Society
 Project Planning and Control G
 Learning in the Workplace Project
 Sustainable Development and Design Practice
 Procurement and Purchasing Management
 Intelligent Production Systems

Master of Engineering LMCL

Specialisations in:

- > Civil and Infrastructure
- > Transport
- > Water Resources Management

ML 2	
CRICOS codevaries by specialisation (see pages 69–71)
Fees* (indicative 2017)A\$33,400 pa
IELTS Total6.5
IELTS Reading6
IELTS Writing6
Start date (SP=study period)SP2 SP5
	* See pages 69–71 for details

Key features

- > Million dollar upgrade of world-class civil laboratories.
- > Industry-based civil engineering project provides real-world experience.
- > Exposure to current industry practice and networks through guest lectures.
- > Links to the Australasian Flow Laboratories.
- > National Association of Testing Authorities (NATA) accreditation.

Overview

The Master of Engineering is a flexible qualification providing you with an advanced level of knowledge in areas relevant to the chosen specialisation.

Civil and Infrastructure

This specialisation provides graduates and current practitioners with knowledge and skills in

areas relevant to the structural and geotechnical sectors of civil engineering. Areas of study include transport, water resources, environmental management and structural engineering.

Transport

You will learn the skills and abilities to synthesise traffic, develop transport and engineering theories and apply them to solve practical cases. You will evaluate and conduct traffic accident investigations, adapt transport data analysis methods and form comprehensive traffic management systems.

Water Resources Management

You will develop skills and abilities to synthesise water and environmental engineering theories and apply them to solve practical cases, create and design water resources and quality management models, adapt hydro-environmental data analysis methods, integrate modelling technology and consolidate GIS applications in forming water management systems.

Career opportunities

Graduates may have opportunities for advancement within their existing careers or the ability to obtain positions with major national and international engineering employers.

Exit point

An exit point is available at the successful completion of the first year with a graduate diploma level qualification.

Entry requirements

Applicants are required to have:

- > a completed four-year bachelor degree in civil engineering or a related discipline from a recognised higher education institution or equivalent; or
- > a graduate certificate, or graduate diploma in civil engineering.

Applicants who have completed a bachelor degree in civil engineering; or a graduate certificate in civil engineering, may be eligible to enter the program with 0.5 EFTSL advanced standing and complete the program in one year of full-time study or equivalent part-time study.

Applicants who have completed a bachelor (honours) degree in civil engineering; or graduate diploma in civil engineering, may be eligible to enter the program with 1.0 EFTSL advanced standing and complete the program in one year of full-time study or equivalent part-time study.

A related discipline may be other four-year duration engineering or science degrees depending on the specialisation selected. Applicants who do not meet the standard entry requirements, will be assessed on a case by case basis by the Program Director.

INDICATIVE FOR CIVIL AND INFRASTRUCTURE SPECIALISATION

FIRST YEAR

Principles of Project Management
Geographical Information Systems and Analysis
Seminar in Sustainability Elective 1

Research Theory and Practice
Civil Engineering Design Project Elective 2

SECOND YEAR

NBE Masters Thesis Part A
Research Data Analysis Elective 3

NBE Masters Thesis Part B
Elective 4
Elective 5

ELECTIVES

Project Risk Management
Prestressed Concrete Design
Environmental Engineering and Modelling
Advanced Geotechnical Engineering
Project Control Methods
Project Leadership and Teams
Cold-formed Steel Design
Earthquake and Masonry Engineering
Project Governance and Ethics
Spatial Analysis and Modelling
Strategy in Project Organisations
Environmental Impact Assessment N
Sustainable Development Assessment

A well-constructed career

Researching his study options online from his home in Mexico, Alejandro Ibarra Valenzuela settled on the University of South Australia to undertake his postgraduate studies in civil engineering.

"Everything is very different from Mexico, from the food to looking for places to live, and the lifestyle is pretty relaxed. The University organises really good activities for international students, from the visit to the Central Market, to wild life parks and Victor Harbor," Alejandro said.

Alejandro was awarded a scholarship for his outstanding performance and he plans to take his newly-acquired knowledge back to Mexico upon graduation.

Alejandro Ibarra Valenzuela

Master of Engineering (Civil)



Master of Engineering **LMEL**

Specialisations in:

- > Electrical Power
- > Telecommunications

ML 2

CRICOS codevaries by specialisation
 (see pages 69–71)
 Fees* (indicative 2017)A\$33,400 pa
 IELTS Total6.5
 IELTS Reading6
 IELTS Writing6
 Start date (SP=study period)SP2 SP5
 * See pages 69–71 for details

Key features

- > Supported by the University of South Australia's Institute for Telecommunications Research (ITR).
- > Designed to address state and national skills shortages in the field of electrical engineering and engineering management.
- > Flexible choice of courses in the first year to help you develop a broad knowledge of engineering.

Overview

Offering two specialisations, this program provides graduates in information and communication technologies and electrical engineering disciplines with an advanced understanding of theory, engineering practice and technologies.

Electrical Power

You will undertake advanced study in the theory and techniques related to electrical power systems including operation and control of modern power systems, renewable and distributed energy generation, and advanced modelling of electrical machines.

Telecommunications

You will study advanced topics in wireless and mobile communication systems, information theory and coding, and telecommunication networks. This specialisation is supported by the University of South Australia's Institute for Telecommunications Research (ITR).

Career opportunities

As an electrical power graduate, you will typically perform research, development and engineering tasks within the electrical power industry. This includes energy systems such as:

- > wind farms and solar
- > power transmission

- > power distribution, or
- > in support of major electrical energy consumers within the manufacturing industry.

As a telecommunications graduate, the functions of your role will vary from research and development (equipment, solutions), through to network planning and provisioning to operations.

Exit points

An exit point is available at the successful completion of the first semester of the program with a graduate certificate level qualification. A second exit point is available at the successful completion of the first year with a graduate diploma level qualification.

Entry requirements

Applicants would normally have completed a bachelor degree in electrical engineering or other relevant discipline, or equivalent qualification. Entry is competitive and experience in engineering and information technology, and completion of professional qualifications will be taken into account. Applicants with an electrical engineering background may be eligible for advanced standing in line with University policy.

INDICATIVE FOR ELECTRICAL POWER SPECIALISATION

FIRST YEAR

Core courses

Renewable Energy Systems UG
 Power System Analysis
 Engineering Research Practice

ELECTIVE COURSES (SELECT 5 COURSES)

Electrical Power specialisation courses

Design and Integration of Renewable Energy Systems
 Operation and Control of Modern Power Systems
 Power Electronics and Drives
 Learning in the Workplace Project

Electrical Engineering courses

Autonomous Mechatronic Systems
 Linear Electronic Circuits
 Advanced Control
 Principles of Test and Evaluation N
 Energy and Society

SECOND YEAR

Select one of:
 Engineering Economic Analysis
 OR
 Engineering Management

Core courses

Renewable and Distributed Power Generation
 Advanced Electrical Machines
 Advanced Power System Modelling and Analysis
 Engineering Minor Thesis 1
 Engineering Minor Thesis 2





\$1.1 million
TO REDUCE ADELAIDE'S
CARBON FOOTPRINT
with CRC for
low carbon living

Australia's
ONLY MASTER
of Surveying
D E G R E E

Natural and Built Environments

Our teaching expertise will prepare you for tomorrow's challenges in the professional fields of environmental management, project management, surveying and urban and regional planning.

With a history of educating professionals, a world-class ranking for our research in institutes such as the Centre for Environmental Risk Assessment and Remediation and the Centre for Water Management and Reuse, and international recognition and accreditations, our graduates have a solid foundation to accelerate their professional careers.

Incorporating experiential learning and academic excellence alongside opportunities for international student exchange and good employment rates, graduates are well equipped to solve today's social, built environment and natural environmental challenges.

Programs in this area

Featured programs

- > Master of Project Management
- > Master of Surveying
- > Master of Environmental Science
- > Master of Urban and Regional Planning

We also offer

- > Graduate Diploma in Built Environment (Building Surveying)
- > Graduate Diploma in Project Management
- > Graduate Diploma in Urban and Regional Planning
- > Graduate Certificate in Built Environment (Building Surveying)
- > Graduate Certificate in Environmental Science
- > Graduate Diploma in Environmental Science

Find out more about environmental, geospatial science or project management at the University of South Australia online:

▶ unisa.edu.au/enviroandgeo

Master of Project Management *IMPA*

Nested with:
 Graduate Diploma in Project Management (IGBP) **1**

CE 2

CRICOS code	varies by program (see pages 69–71)
Fees* (indicative 2017)	A\$31,400 pa
IELTS Total	6.5
IELTS Reading	6
IELTS Writing	6
Start date (SP=study period)	SP2 SP5

* See pages 69–71 for details

Key features

- > Graduates are exposed to a spectrum of possibilities in various industries with this versatile program.
- > Undertake an integrated research project.
- > Comprehensive coverage of the Project Management Institute PMBOK® Guide and endorsed by the Australian Institute of Project Management (AIPM).

Overview

This program provides an advanced understanding of risk management, leadership, strategy and international best practice in project management that is adopted by many government and industry sectors worldwide.

You will receive advanced teaching in the successful management of projects from a wide range of industries. Additionally, you will develop and undertake an integrated research project; in some cases this project might focus on a real issue within your employment.

This program is offered in the form of a nested suite of two programs at postgraduate level (graduate diploma and master). Each qualification extends to the next, allowing you to easily transition to a master level qualification.

Career opportunities

Project managers are employed in diverse areas such as:

- > assets and facilities
- > biopharmaceuticals
- > community development
- > construction
- > defence
- > engineering
- > finance
- > government
- > information technology
- > infrastructure
- > resources
- > the arts.

FIRST YEAR

Principles of Project Management
Project Risk Management
Procurement and Contract Management
Project Governance and Ethics
Project Control Methods
Project Leadership and Teams
Economic, Social and Environmental Analysis
Research Theory and Practice

SECOND YEAR

Portfolio and Program Management
Research Data Analysis
Project Management Minor Thesis 1
Strategy in Project Organisations
International Project Practices
Project Management Minor Thesis 2

Professional recognition

The master degree, graduate diploma and graduate certificate all provide comprehensive coverage of the Project Management Institute PMBOK® Guide and are endorsed by the Australian Institute of Project Management (AIPM). Graduates from these courses are eligible to apply for appropriate membership.

Entry requirements

To be eligible for admission into the two-year Master of Project Management, an applicant must hold:

- > a bachelor degree from a recognised tertiary education institution; or
- > a Graduate Diploma in Project Management from a recognised tertiary education institution.

Master of Surveying *IMSY*

ML 2

CRICOS code	O81831A
Fees* (indicative 2017)	A\$32,400 pa
IELTS Total	6.5
IELTS Reading	6
IELTS Writing	6
IELTS Listening	6
IELTS Speaking	6
Start date (SP=study period)	SP2

* See pages 69–71 for details

Key features

- > Opportunities to undertake cadastral surveying training.
- > Strong focus on integrating learning into industry experience.
- > Listed in 2014 by McCrindle Research as a degree of high employment opportunity.
- > Predicted Australia-wide shortage of skilled land surveyors in 2020.™

™ BIS Shrapnel January 2015

Overview

The Master of Surveying is designed to develop your theoretical background, professional ethics and practical skills to be able to undertake professional land surveying measurements and analysis.

Career opportunities

As a graduate, you may find employment in the land boundary (cadastral) and engineering surveying areas. A fast growing area of employment is in the acquisition and processing of aerial and terrestrial laser scanning (LIDAR) and other opportunities exist in mine surveying, though some states require additional training.

Professional recognition

Graduates will be eligible to register as a Graduate Surveyor with the Surveyors Board of South Australia and after a period of relevant employment will be eligible to apply for general certification as a Practising Spatial Scientist with the Surveying and Spatial Sciences Institute (SSSI). Further study and work experience may lead to certification as a specialist in one of the five commissions of the SSSI.

Exit point

An exit point is available at the successful completion of first year with the award of Graduate Diploma in Surveying.

FIRST YEAR

Cadastral Surveying
Geodetic Science
Remote Sensing: Photogrammetry (University of Tasmania)
Land Law and Administration
Cadastral Surveying Experience
Observation and Network Analysis
Advanced Satellite Surveying
Surveying Applications

SECOND YEAR

Precision Positioning
Land Development
Research Theory and Practice
Surveying Project 1
Professional Enrichment Project (Surveying)
Professional Business Practice and Ethics (Surveying)
Surveying Project 2

Entry requirements

Applicants should have a completed bachelor degree in a related discipline from a recognised higher education institution or equivalent qualification. This degree will have strength in geospatial science and will reside in disciplines such as Geographical Information Systems (GIS), science, environmental science, natural resource management and geography. Applicants must have passed university coursework with the following content:

- > maps and coordinate systems
- > geographical information systems
- > urban planning
- > remote sensing
- > land surveying including GPS
- > earth systems/geology
- > mathematics (preferably engineering mathematics)
- > physics.

Graduates of the UniSA Bachelor of Geospatial Science are eligible for entry to this program.

Professional accreditation

This professional qualification is recognised by the Council of Reciprocating Surveyors Board of Australia and New Zealand via accreditation provided by the Surveyors Board of South Australia. Completion of the first year of this degree provides the option to enter into an agreement with the Surveyors Board of South Australia to undertake training in cadastral surveying, which will lead to formal licensing by the board. Completion of year two of this program, whilst undertaking cadastral surveying projects, results in official credit towards the experience required to become a Licensed Surveyor.

Master of Urban and Regional Planning *IMUB*

Nested with:
Graduate Diploma in Urban and Regional Planning (IGUR) **1**

CE 2	
CRICOS code	varies by program (see pages 69–71)
Fees* (indicative 2017)	A\$30,400 pa
IELTS Total	6.5
IELTS Reading	6
IELTS Writing	6
Start date (SP=study period)	SP2 SP5
	* See pages 69–71 for details

Key features

- > Experienced urban and regional planners earn \$90,000 per year.*
- > Opportunities for international field trips and work placements.
- > Over 60 years of education experience in planning.

*myfuture.edu.au

Overview

Planners undertake challenging and exciting work in a variety of spheres at local, national and international levels, and are involved in a diverse range of professional activities including urban design and environmental, social, heritage, transport and community planning including the development of sustainable cities. This program has a graduate diploma nested within it allowing you to easily transition from this into the master program upon completion of the graduate diploma.

Career opportunities

Previous graduates have found employment working on projects such as:

- > coastal planning
- > energy-efficient housing
- > new public transport services
- > the assessment of development proposals in local and state government
- > the planning and design of new towns and suburbs
- > the protection of heritage buildings and landscapes.

Opportunities also exist in the private sector including planning consultancy companies and property and urban development companies.

FIRST YEAR	
Introduction to Regional and Urban Planning	
Research Theory and Practice Elective	
Elective	
Social Planning and Community Issues	
Transport and Planning Sustainable Urban Design Elective	

SECOND YEAR	
Contemporary Planning Theory	
Transport Policy	
Planning Research Project 1N Sustainable Urban Design Workshop	
Planning Research Project 2 Environmental Impact Assessment N	
Urban Development and Implementation N	
Elective	

ELECTIVES	
Planning and Professional Ethics	
Urban Management and Law	
Comparative Planning	
Planning Study Visit	
Seminar in Sustainability Policy and Development Assessment Workshop N	
Planning for Healthy Cities	
Urban Regeneration	
Transport Modelling	
Planning Work Placement	
Sustainable Development Assessment	

Professional recognition

Recognised by the Planning Institute of Australia (PIA), this program provides full exemption from the educational requirements for PIA membership. Holding this professionally accredited qualification enables graduates to apply for corporate membership of PIA and undertake training to gain status as a Professional Certified Planner. Graduates will be required to undertake continuing professional development offered by PIA.

Entry requirements

Applicants are required to:

- > hold a degree in any discipline
- > have completed the Graduate Diploma in Urban and Regional Planning.

Master of Environmental Science *LMEV*

Nested with:
Graduate Certificate in Environmental Science (LCES)
Graduate Diploma in Environmental Science (LGES)

ML 2	
CRICOS code	varies by specialisation (see pages 69–71)
Fees* (indicative 2017)	A\$31,400 pa
IELTS Total	6.5
IELTS Reading	6
IELTS Writing	6
Start date (SP=study period)	SP2 SP5
	* See pages 69–71 for details

Key features

- > Flexible options include a range of electives to tailor your chosen specialisation.
- > Developed by industry leaders in response to industry demand.

Overview

This program provides an integrated knowledge of sustainability, natural resources, and geospatial sciences which can be applied to professions across the environmental science field. It will enable you to develop skills in natural and/or water resources management, and provide a strong grounding in the research techniques and processes needed to undertake a major research project closely aligned with industry.

The program offers the opportunity to pursue higher level study prior to entering the workforce as well as the formal continuing professional development needs of environmental scientists and managers already in the workplace.

This program is also offered in the form of a nested suite of three programs at postgraduate level (graduate certificate, graduate diploma and master). Each qualification extends to the next, allowing you to easily transition to a master-level qualification.

Career opportunities

Completion of the Master of Environmental Science may enhance graduates' opportunities for advancement within their existing employment. Employment opportunities include positions in:

- > engineering, manufacturing and consulting companies
- > media and journalism businesses
- > government departments and agencies

FIRST YEAR	
Seminar in Sustainability	
Ecological Economics N	
Elective 1	
Elective 2	
Seminar in Sustainability	
Ecological Economics N	
Elective 1	
Elective 2	

SECOND YEAR	
Elective 4	
Elective 5	
NBE Masters Thesis Part A	
Elective 6	
Elective 7	
NBE Masters Thesis Part B	

- > large private sector industries
- > non-government organisations (many aid and welfare organisations operate sustainability initiatives in developing countries)
- > small and medium enterprises (eg tourism, hospitality, planning).

Entry requirements

Applicants are required to have a completed bachelor degree, graduate certificate, or a graduate diploma in a relevant discipline from a recognised higher education institution or equivalent.

Relevant disciplines typically include science, engineering, environmental studies and management. Applicants with qualifications in other disciplines are encouraged to apply and will be assessed on a case by case basis.

Applicants who do not meet the above requirements may be eligible to enter the Graduate Certificate in Environmental Science based on an appropriate amount of professional experience.

Seizing a future in environmental management

Stanley Machuki came from Kenya to complete his studies with the "ambition of becoming a scholar working on policy in developing countries," Stanley was committed to finding a well-recognised university to meet his aim. Stanley believed the University was the right choice "due to its reputation and the high level of training that is associated with its teaching in various programs."

Stanley Machuki

Master of Environmental Management and Sustainability





Application information and complete list of degrees

Application information for coursework students..... 66-71

International students – how to apply..... 66-68

Postgraduate coursework programs offered in 2017..... 69-71

Application information for research students72-80

How to become a research student..... 72-75

Postgraduate research programs offered in 2017 76-78

International application form for coursework students..... 79-80

International students

How to apply



1 Find the best program for you

Research your options using this guide or by checking information online.

▶ programs.unisa.edu.au



2 Check admission requirements

Confirm that you meet all entry requirements including English language, academic entry, program specific requirements and information relevant to your home country. Refer to pages 92-95 for further details.

▶ programs.unisa.edu.au

If you have further questions about programs or admission requirements at the University of South Australia, you can send your query through to us online. We will respond to your enquiry the next business day. Just follow the instructions online.

▶ unisa.edu.au/international/enquire



3 Apply

You can apply to study at the University of South Australia via three methods:

> **Online** – this is the preferred option for submitting your application. You can apply for up to six programs using our secure and streamlined service. You can also save your application and return later to continue the process, as well as track the progress of your application.

▶ unisa.edu.au/international/apply

> **Form** – complete the form at the back of this handbook.

> **Agents** – you can also apply via one of the University's education agents. A list of our agents is available at:

▶ unisa.edu.au/find-an-agent

Please submit your application at least two months prior to when you wish to commence your students (some students may require more time to ensure they receive their visa).

Supporting documentation

Ensure that the following application documents are sent to the University of South Australia to avoid delays:

- > Certified copies of academic transcripts – including your institution's grading system;
- > Certified copies of academic graduation diplomas/degrees;
- > English test results (eg IELTS or TOEFL) where applicable;
- > Detailed syllabi/course outlines of previous studies if you are applying for credit or advanced standing;
- > Additional forms or academic and employer references, if required;
- > Certified copy of the personal details page and signature page of your passport.

A certified copy is a copy of the original document that has been certified by an official such as a University of South Australia Education Agent, University of South Australia staff member, Justice of the Peace, Notary Public, police officer or examining authority. Please do not send originals as they will not be returned.



4 Application assessment

The University of South Australia or a registered University of South Australia Education Agent will acknowledge receipt of your application. You should be notified of the outcome of your application within one to three weeks (from the date your application and supporting documentation is received). If you are eligible for your chosen program, an offer letter package will be sent to you via email. If you are not eligible, we may suggest an alternative program or pathway studies. Your application will be assessed in accordance with the *Selection and entry to programs policy* which includes the *Guidelines on genuine temporary entry* and *Guidelines on living costs and evidence of funds*. These can be found at:

▶ unisa.edu.au/international/apply



5 Accept your offer

To accept a place in your offered program you will need to:

- > Check the offer letter package carefully to make sure all sections are correct;
- > Accept your offer – to accept your offer you will be required to make your Total First Payment. The Total First Payment includes the First Tuition Payment and visa length Overseas Health Cover (OSHC) fee. OSHC is a compulsory medical insurance required by the Australian Government for student visa holders. You can choose for the University to arrange this cover through Bupa or arrange your own visa length OSHC. A family rate will apply for students with an accompanying spouse and/or family members. Along with the Total First Payment, we require a completed *Acceptance and Payment Form* (Section 3 of your offer letter) and a certified copy of the personal details page and signature page of your passport. Do not make payment before meeting all conditions listed in your offer letter.

▶ unisa.edu.au/international/accept

How to make payment

The Total First Payment which includes the First Tuition Payment quoted in Australian dollars must be paid along with the visa length Overseas Student Health Cover (OSHC) fee if you choose for the University to arrange your OSHC through Bupa. OSHC is a compulsory medical insurance required by the Australian Government for student visa holders. Tuition payment covers the cost of tuition only and not accommodation, books or living costs. Please note that the fees can vary according to the annual program load and total duration. You may make payment using a credit card, bank draft/cheque or by telegraphic transfer.

Confirmation of Enrolment (CoE) and student visa

Once you have accepted, a CoE document will be issued to you by the University which you can use to apply for a student visa for entry into Australia. We encourage you to apply for your student visa as soon as you receive your CoE. Pre-departure information is available on the new student letter that is forwarded to you with the CoE document.

▶ unisa.edu.au/student-visa



6 Prepare for arrival

Once you have accepted your place there are a few things you can do to help prepare for your arrival at the University of South Australia.

- > **Enrol online** – As an international student, you will be able to enrol online from anywhere, giving you the same choice as local students when it comes to organising your timetable.
- > **Travel bookings** – Flights to Australia can be heavily booked during January, February and July so check with your travel agent early for flight bookings. However, you should not confirm bookings until you receive your CoE document. Once you have confirmed your travel arrangements, you can arrange airport pickup and on-arrival accommodation via the University.
- > **Arrive on time** – It is important you arrive on time to start your program with the orientation week as this provides you with vital information and the best possible start to your university career. If you are unable to arrive by the commencement date you may have to defer your offer. Please note: Orientation is compulsory for some programs.
- > **Orientation** – The University's staff will ensure you receive a warm welcome to Adelaide. Orientation sessions and activities introduce you to life in Adelaide and the University and give you the opportunity to meet other new students.

▶ unisa.edu.au/international/pre-departure-checklist

Any questions?

▶ unisa.edu.au/international

Telephone: +613 9627 4854

Facsimile: +618 8302 9121

Email: international.office@unisa.edu.au

Freecall:

Australia: 1800 1818 58

China (Northern): 10 800 61 00 245

China (Southern): 10 800 261 0245

Indonesia: 001 803 61 269

South Korea: 0079 8612 1017

Taiwan: 00801 611 343

OR contact one of the University of South Australia's Education Agents via:

▶ unisa.edu.au/find-an-agent

Minimum English language entry requirements

The table below sets out the minimum English language requirements for entry into programs at the University of South Australia and is provided as a guide only. Many programs require higher international English language proficiency scores than those below, so you'll need to check the specific score for your preferred program in the charts on pages 69-71.

Applicants from countries where English is an official language or who have recent study experience in an English setting may be able to use this study to meet the English language proficiency requirement. If you have completed previous study in English you must send certified documentation from the educational institution stating that the language of instruction was English. The University's international office will consider all applications individually.

Please visit unisa.edu.au/international and click on How to Apply and English language requirements on the left menu.

English language test (see Note 1)	Score
IELTS (International English Language Testing System) (academic)	6.5 overall with a 6.0 in Reading and Writing
University of Cambridge ESOL examination	
Certificate of Proficiency in English	45
Certificate in Advanced English	58
TOEFL (Test of English as a Foreign Language)	
IBT (Internet-based test)	90 with no band less than 20
PBT (Paper-based test)	577 with TWE (Test of Written English) of 4.5
Pearson PTE Academic	66 with no communicative score less than 60
English language programs	Pass Part 2
Successful completion of the Centre for English Language at the University of South Australia (CELUSA) Academic English Program	Level 5
Successful completion of relevant TAFE SA English program	TAFE SA English for Academic Purpose (EAP) Advanced
Other qualifications	
Successful completion within the last two years of an Australian matriculation qualification (or equivalent) undertaken in English in a country in which English is widely used, as determined by the University; or	
Successful completion within the last two years of a tertiary qualification at diploma level or above and undertaken in English in Australia; or	
Successful completion of at least two years of tertiary study at diploma level or above and undertaken in English within the last four years in a country in which English is widely used, as determined by the University (see Note 2).	

Note 1: Results from IELTS, University of Cambridge ESOL examinations, TOEFL and Pearson are generally valid for two years.

Note 2: At the University's discretion, significant and relevant work experience obtained in an English speaking setting may also be accepted in lieu of an English language test score obtained via one of the tests recognised by the University.

For English language help

Centre for English Language at the University of South Australia (CELUSA)

Applicants who do not meet the University of South Australia English language entry requirements may be able to study at CELUSA. CELUSA specialises in helping international students improve their English for undergraduate and postgraduate study. CELUSA offers International English Language Testing System (IELTS) testing and Academic English (AE) language preparation programs for students continuing on to study at the University of South Australia, the South Australian Institute of Business and Technology (SAIBT), Le Cordon Bleu and other Australian education institutions.

The length of your AE language program will depend on your English level when you begin and the language requirements of your program. However, as a guide, you will normally need to complete 10 weeks of study for every additional 0.5 needed in your overall IELTS score.

Students who are eligible for and successfully complete a CELUSA program at an appropriate level will not generally be required to take the IELTS or other English language test. Please note that some programs will require IELTS for registration.

CELUSA is Adelaide's IELTS test centre. For further information visit the website.

unisa.edu.au/celusa

Postgraduate coursework programs offered in 2017

For international students
IELTS English language
requirements
Please refer to page 68 for minimum
English language requirements for
postgraduate study

PROGRAM	Program Code	CRICOS Code	Program Duration (in EFTSL)	2017 Indicative Annual Tuition Fee (A\$)	Start date (SP = Study Period)	Quota Applies	Home Campus	IELTS OVERALL TOTAL SCORE	IELTS READING	IELTS WRITING	IELTS LISTENING	IELTS Speaking
Master Degrees												
Advanced Clinical Physiotherapy	IMAP	O88575M	1	36,400	SP2		CEA	7	7	7	7	7
Advanced Clinical Physiotherapy (Sports)	IMAP	O88577J	1	36,400	SP2		CEA	7	7	7	7	7
Advanced Clinical Physiotherapy (Musculoskeletal)	IMAP	O88576K	1	36,400	SP2		CEA	7	7	7	7	7
Architecture	DMAE	O60208J	2	31,400	SP2		CWE	6.5	6	6		
Clinical Pharmacy**	IMCM		1.5	30,400	SP2 SP5		CEA	7	7	7		
Data Science	LMDS	O79912G	2	31,500	SP2 SP5		MLK	6.5	6	6		
Design (Communication Design)	DMSP	O82771M	2	28,400	SP2 SP5		CWE	6.5	6	6		
Design (Design and Construct)	DMSP	O82770A	2	28,400	SP2 SP5		CWE	6.5	6	6		
Design (Industrial Design)	DMSP	O71952G	2	28,400	SP2 SP5		CWE	6.5	6	6		
Design (Interior Architecture)	DMSP	O82769E	2	28,400	SP2 SP5		CWE	6.5	6	6		
Design (Sustainable Design)	DMSP	O82768F	2	28,400	SP2 SP5		CWE	6.5	6	6		
Education (TESOL)	MMTL	O82450F	2	25,400	SP2 SP5		MAG	6.5	6	6		
Engineering (Autonomous Systems)	LMEB	O80230A	2	33,400	SP2 SP5		MLK	6.5	6	6		
Engineering (Civil and Infrastructure)	LMCL	O88538E	2	33,400	SP2 SP5		MLK	6.5	6	6		
Engineering (Transport)	LMCL	O88539D	2	33,400	SP2 SP5		MLK	6.5	6	6		
Engineering (Water Resources Management)	LMCL	O88540M	2	33,400	SP2 SP5		MLK	6.5	6	6		
Engineering (Electrical Power)	LMEL	O79908C	2	33,400	SP2 SP5		MLK	6.5	6	6		
Engineering (Engineering Management)	LMEB	O77355C	2	33,400	SP2 SP5		MLK	6.5	6	6		
Engineering (Telecommunications)	LMEL	O79909B	2	33,400	SP2 SP5		MLK	6.5	6	6		
Environmental Science	LMEV	O58635G	2	31,400	SP2 SP5		MLK	6.5	6	6		
Information Management (Archives and Records Management)	DMIL	O81827G	2	29,400	SP2 SP5		CWE	6.5	6	6		
Information Management (Library and Information Management)	DMIL	O81829F	2	29,400	SP2 SP5		CWE	6.5	6	6		
Information Technology (Enterprise Management)	LMIG	O81872C	2	29,400	SP2 SP5		MLK	6.5	6	6	6	6
Information Technology (Business Information Systems)*	LMIG	O81828G	2	29,400			MLK	6.5	6	6	6	6
Medical Sonography**	IMSO		1.5	26,400	SP2 SP5		CEA	7	7	7	7	7
Nursing	IMNI	O46395G	1.5	28,400	SP2		CEA	6.5	6.5	6.5	6.5	6.5

Key

Home campus codes

CEA	City East Campus
CWE	City West Campus
MLK	Mawson Lakes Campus
MAG	Magill Campus
WHY	Whyalla/Mount Gambier Campus

** This program is not available to international students studying onshore under a student visa.

* There is no direct entry into this specialisation. Students can apply to transfer into it via a competitive selection process at the end of the first study period.

^ Available only when packaged with a Graduate Certificate in Business.

Important information

General

Please note: The University of South Australia reserves the right to alter, amend or delete any program, fee, course, admission requirement, or mode of delivery without prior notice.

For the most up-to-date information visit:
programs.unisa.edu.au

Flexible study

Flexible study options, including online, are offered in many programs.

Please check the program website for further details.
Visit: programs.unisa.edu.au

Start dates 2017

SP = Study Period

Semester 1	SP1	9 Jan 2017 – 24 Mar 2017
	SP2	27 Feb 2017 – 1 Jul 2017
	SP3	3 Apr 2017 – 16 Jun 2017
Semester 2	SP4	26 Jun 2017 – 8 Sept 2017
	SP5	24 Jul 2017 – 25 Nov 2017
	SP6	18 Sept 2017 – 1 Dec 2017
Summer Term	SP7	30 Oct 2017 – 2 Feb 2018

Please note that some programs may have a different start date. Please check your offer letter for details. Actual teaching dates vary in a small percentage of courses. It is important that students consult their timetable for exact teaching dates for their specific course. Note that commencement of study begins with a University of South Australia orientation program. Please ensure your travel plans enable you to arrive in time for this.

Visit: unisa.edu.au/newstudents

Fees

Fees listed are valid for students enrolling in the 2017 academic year only. Students enrolled in a new program should be aware that annual tuition fees will increase for each year of study at the University of South Australia. You will be liable for these fees upon acceptance of an offer from the University of South Australia. In the event of a variation between the fees listed here and the approved University schedule of tuition fees found at programs.unisa.edu.au, the approved University schedule will prevail. The University reserves the right to alter, amend or delete any program, fee or admission requirement without prior notice.

Postgraduate coursework programs offered in 2017

For international students
IELTS English language
requirements
Please refer to page 68 for minimum
English language requirements for
postgraduate study.

PROGRAM	Program Code	CRICOS Code	Program Duration (in EFTSL)	2017 Indicative Annual Tuition Fee (A\$)	Start Date (SP = Study Period)	Quota Applies	Home Campus	IELTS OVERALL TOTAL SCORE	IELTS READING	IELTS WRITING	IELTS LISTENING	IELTS Speaking
Occupational Therapy (Graduate Entry)	IMOG	O24071J	2	35,400	SP2	Q	CEA	7	7	7	7	7
Physiotherapy (Graduate Entry)	IMPE	O45406F	2	38,400	SP2	Q	CEA	7	7	7	7	7
Professional Accounting	DMPC	O82982M	2	31,700	SP2 SP5		CWE	6.5	6	6		
Project Management	IMPA	O81832M	2	31,400	SP2 SP5		CEA	6.5	6	6		
Social Work	MMSK	O64242G	2	25,400	SP1	Q	MAG	6.5	6	6		
Surveying	IMSY	O81831A	2	32,400	SP2		MLK	6.5	6	6	6	6
Teaching (Early Childhood)	MMET	O77214E	2	26,400	SP2		MAG	7	7	7	7	7
Teaching (Primary)	MMET	O77215D	2	26,400	SP2		MAG	7	7	7	7	7
Teaching (Secondary) - Arts Education	MMET	O77217B	2	26,400	SP2 SP5		MLK	7	7	7	7	7
Teaching (Secondary) - Design and Technology Education	MMET	O77217B	2	26,400	SP2 SP5		MLK	7	7	7	7	7
Teaching (Secondary) - English Education	MMET	O77217B	2	26,400	SP2 SP5		MLK	7	7	7	7	7
Teaching (Secondary) - Health and Physical Education	MMET	O77217B	2	26,400	SP2 SP5		MLK	7	7	7	7	7
Teaching (Secondary) - Humanities and Social Sciences	MMET	O77217B	2	26,400	SP2 SP5		MLK	7	7	7	7	7
Teaching (Secondary) - Languages Education	MMET	O77217B	2	26,400	SP2 SP5		MLK	7	7	7	7	7
Teaching (Secondary) - Mathematics Education	MMET	O77217B	2	26,400	SP2 SP5		MLK	7	7	7	7	7
Teaching (Secondary) - Science Education	MMET	O77217B	2	26,400	SP2 SP5		MLK	7	7	7	7	7
Urban and Regional Planning	IMUB	O71951J	2	30,400	SP2 SP5		CEA	6.5	6	6		
Visual Art and Creative Practice	DMVC	O48557M	1.5	26,400	SP2 SP5		CWE	6.5	6	6		
Graduate Diploma												
Built Environment (Building Surveying)**	IGBE		1	30,400	SP2 SP5		CEA	6.5	6	6		
Data Science	LGDS	O79911G	1	31,500	SP2 SP5		MLK	6.5	6	6		
Design (Communication Design)	DCSP	O82776F	1	28,400	SP2 SP5		CWE	6.5	6	6		
Design (Design and Construct)	DCSP	O82775G	1	28,400	SP2 SP5		CWE	6.5	6	6		
Design (Industrial Design)	DCSP	O82774G	1	28,400	SP2 SP5		CWE	6.5	6	6		
Design (Interior Architecture)	DCSP	O82773J	1	28,400	SP2 SP5		CWE	6.5	6	6		
Design (Sustainable Design)	DCSP	O82772K	1	28,400	SP2 SP5		CWE	6.5	6	6		
Engineering (Autonomous Systems)	LGEB	O80231M	1	33,400	SP2 SP5		MLK	6.5	6	6		
Engineering (Engineering Management)	LGEB	O77354D	1	33,400	SP2 SP5		MLK	6.5	6	6		
Human Factors and Safety Management Systems**	IGHF		1	31,400	SP2 SP5		CEA	6.5	6	6		
Information Management (Archives and Records Management)	DGIL	O81825K	1	29,400	SP2 SP5		CWE	6.5	6	6		
Information Management (Library and Information Management)	DGIL	O81824M	1	29,400	SP2 SP5		CWE	6.5	6	6		
Information Technology (Enterprise Management)	LGIG	O81822B	1	29,400	SP2 SP5		MLK	6.5	6	6		
Medical Sonography**	ICSO		1	26,400	SP2 SP5			7	7	7	7	7
Occupational Health and Safety Management**	IGOY		1	31,400	SP2 SP5		CEA	6.5	6	6		
Project Management	IGBP	O13176B	1	31,400	SP2 SP5		CEA	6.5	6	6		
Public Relations**	MGPU		1	26,400	SP2 SP5		MAG	6.5	6	6		
Urban and Regional Planning	IGUR	OOO579A	1	30,400	SP2 SP5		CEA	6.5	6	6		
Visual Art and Creative Practice	DGVC	O48556A	1	26,400	SP2 SP5		CWE	6.5	6	6		
Graduate Certificate												
Breast Imaging**	ICBR		0.5	25,400	SP2 SP5		CEA	7	7	7	7	7
Built Environment (Building Surveying)**	ICBE		0.5	30,400	SP2 SP5		CEA	6.5	6	6		
Data Science	LCDS	O79910J	0.5	31,500	SP2 SP5		MLK	6.5	6	6		
Human Factors and Safety Management Systems**	ICHF		0.5	31,400	SP2 SP5		CEA	6.5	6	6		
Information Management	DCIL	O81821C	0.5	29,400	SP2 SP5		CWE	6.5	6	6		
Information Technology	LCIG	O81820D	0.5	29,400	SP2 SP5		MLK	6.5	6	6		
Occupational Health and Safety Management**	ICOY		0.5	31,400	SP2 SP5		CEA	6.5	6	6		
Population Health Practice	ICPR	O84730D	0.5	31,400	SP2		CEA	7	6.5	7	6.5	6.5
Visual Effects	ICVE	O88908F	0.5	TBA	SP1 SP3 SP6		CEA	6.5	6	6		
Business School – Master Degrees												
Business Administration	DMMA	O48635B	1.5	35,300	SP1 SP3 SP4 SP6		CWE	6.5	6	6		
Business Administration (Finance)	DMMA	O83050C	1.5	35,300	SP1 SP3 SP4 SP6		CWE	6.5	6	6		

For international students
IELTS English language
requirements
Please refer to page 68 for minimum
English language requirements for
postgraduate study.

PROGRAM	Program Code	CRICOS Code	Program Duration (in EFTSL)	2017 Indicative Annual Tuition Fee (A\$)	Start Date (SP = Study Period)	Quota Applies	Home Campus	IELTS OVERALL TOTAL SCORE	IELTS READING	IELTS WRITING	IELTS LISTENING	IELTS Speaking
Business Administration (Human Resource Management)	DMMA	O83052A	1.5	35,300	SP1 SP3 SP4 SP6		CWE	6.5	6	6		
Business Administration (Marketing)	DMMA	O83054K	1.5	35,300	SP1 SP3 SP4 SP6		CWE	6.5	6	6		
Finance	DMFC	O82591D	2	31,700	SP2 SP5		CWE	6.5	6	6		
Finance (Banking)	DMFC	O82594A	2	31,700	SP2 SP5		CWE	6.5	6	6		
Human Resource Management	DMHM	O81880C	2	31,700	SP2 SP5		CWE	6.5	6	6		
International Business	DMIN	O81137A	2	31,700	SP2 SP5		CWE	6.5	6	6		
Management	DMME	O82511J	2	31,700	SP2 SP5		CWE	6.5	6	6		
Management (Arts and Cultural Management)	DMMC	O81136B	2	31,700	SP2 SP5		CWE	6.5	6	6		
Management (Integrated Supply Chain Management)	DMME	O82512G	2	31,700	SP2 SP5		CWE	6.5	6	6		
Management (Tourism and Event Management)	DMME	O82507E	2	31,700	SP2 SP5		CWE	6.5	6	6		
Marketing	DMMR	O81138M	2	31,700	SP2 SP5		CWE	6.5	6	6		
Professional Accounting	DMPC	O82982M	2	31,700	SP2 SP5		CWE	6.5	6	6		
Business School – Graduate Diplomas												
Business Administration	DGMA	O24133M	1	35,300	SP1 SP3 SP4 SP6		CWE	6.5	6	6		
Human Resource Management	DGHU	O55259G	1	31,700	SP2 SP5		CWE	6.5	6	6		
International Business	DGIB	O54755K	1	31,700	SP2 SP5		CWE	6.5	6	6		
Management	DGMT	O58630B	1	31,700	SP2 SP5		CWE	6.5	6	6		
Management (Arts and Cultural Management)	DGAC	O24151J	1	31,700	SP2 SP5		CWE	6.5	6	6		
Management (Integrated Supply Chain Management)	DGMT	O77574C	1	31,700	SP2 SP5		CWE	6.5	6	6		
Management (Tourism and Event Management)	DGMT	O77575B	1	31,700	SP2 SP5		CWE	6.5	6	6		
Marketing	DGMK	O36272A	1	31,700	SP2 SP5		CWE	6.5	6	6		
Business School – Graduate Certificate												
Business	DCBB	O81140F	0.5	31,700	SP2 SP5		CWE	6.5	6	6		
Business Administration	DCMA	O24119J	0.5	35,300	SP1 SP3 SP4		CWE	6.5	6	6		
Human Resource Management	DCHU	O55258G	0.5	31,700	SP2 SP5		CWE	6.5	6	6		

Key

Home campus codes

CEA	City East Campus
CWE	City West Campus
MLK	Mawson Lakes Campus
MAG	Magill Campus
WHY	Whyalla/Mount Gambier Campus

** This program is not available to international students studying onshore under a student visa.

* There is no direct entry into this specialisation. Students can apply to transfer into it via a competitive selection process at the end of the first study period.

^ Available only when packaged with a Graduate Certificate in Business.

Important information

General

Please note: The University of South Australia reserves the right to alter, amend or delete any program, fee, course, admission requirement, or mode of delivery without prior notice.

For the most up-to-date information visit:
programs.unisa.edu.au

Flexible study

Flexible study options, including online, are offered in many programs.

Please check the program website for further details.
Visit: programs.unisa.edu.au

Start dates 2017

SP = Study Period

Semester 1	SP1	9 Jan 2017 – 24 Mar 2017
	SP2	27 Feb 2017 – 1 Jul 2017
	SP3	3 Apr 2017 – 16 Jun 2017
Semester 2	SP4	26 Jun 2017 – 8 Sept 2017
	SP5	24 Jul 2017 – 25 Nov 2017
	SP6	18 Sept 2017 – 1 Dec 2017
Summer Term	SP7	30 Oct 2017 – 2 Feb 2018

Please note that some programs may have a different start date. Please check your offer letter for details. Actual teaching dates vary in a small percentage of courses. It is important that students consult their timetable for exact teaching dates for their specific course. Note that commencement of study begins with a University of South Australia orientation program. Please ensure your travel plans enable you to arrive in time for this.

Visit: unisa.edu.au/newstudents

Fees

Fees listed are valid for students enrolling in the 2017 academic year only. Students enrolled in a new program should be aware that annual tuition fees will increase for each year of study at the University of South Australia. You will be liable for these fees upon acceptance of an offer from the University of South Australia. In the event of a variation between the fees listed here and the approved University schedule of tuition fees found at programs.unisa.edu.au, the approved University schedule will prevail. The University reserves the right to alter, amend or delete any program, fee or admission requirement without prior notice.

How to become a research student

Your pathway to becoming a research student at the University of South Australia from start to finish.



1

Find a research area



2

Check your eligibility



3

Search for a supervisor



4

Find a scholarship



5

Apply

Types of research degrees

Doctor of Philosophy (PhD)

*4 years including examination
(or part-time equivalent)*

Doctor of Philosophy (PhD) students prepare a substantial piece of work (thesis) which represents a significant contribution to their chosen field. PhD graduates will be capable of independently planning and executing original research that generates new knowledge.

Professional doctorate

*4 years including examination
(or part-time equivalent)*

A professional doctorate is a rigorous program of advanced study and research designed to meet the needs of industry and professional groups. Professional doctorates usually consist of a blend of coursework and research.

Masters by research

*2 years including examination
(or part-time equivalent)*

Masters by research students learn, under supervision, how to analyse a thesis topic at an advanced level and apply research methodology and techniques in the contribution of new knowledge to their field.

For more information on each of these steps please visit:

↗ unisa.edu.au/resdegrees



1

Find a research area

Match your research interest to areas of research at the University of South Australia.

Our research areas include:

BUSINESS AND LAW

- > Accounting
- > Applied Economics
- > Finance
- > Human Resources and Organisation Behaviour
- > International Business
- > Law
- > Management and Corporate Social Responsibility
- > Marketing
- > Property
- > Sports, Tourism and Leisure Management

For more information about research possibilities, contact
PhDEnquiriesBusiness@unisa.edu.au

EDUCATION, ARTS AND SOCIAL SCIENCES

- > Architecture
- > Australian Studies
- > Communication
- > Design (Industrial)
- > Design (Visual Communication)
- > Education
- > Indigenous Studies
- > Interior Architecture
- > International Studies
- > Languages and Linguistics
- > Psychology (PhD only)
- > Social Work and Social Policy
- > Sociology
- > Visual Arts

For more information about research possibilities, contact
EASResearchStudents@unisa.edu.au

HEALTH AND MEDICAL SCIENCES

- > Cancer Biology
- > Health Sciences
- > Human Movement
- > Laboratory Technology (Masters only)
- > Medical Radiation
- > Medical Science
- > Nursing
- > Occupational Therapy
- > Pharmaceutical Science (Masters only)
- > Pharmacology (PhD only)
- > Pharmacy
- > Physiotherapy
- > Podiatry
- > Population Health
- > Public Health

For more information about research possibilities, contact
HSC-HealthResearch@unisa.edu.au

ENGINEERING, SCIENCE AND TECHNOLOGY

- > Applied Physics
- > ATN Industry Doctoral Training Centre
- > Bioinformatics
- > Biomaterials Engineering and Nanomedicine
- > Civil Engineering
- > Computer and Information Science
- > Construction Management
- > Electrical and Information Engineering
- > Energy and Advanced Manufacturing
- > Environmental Science and Engineering
- > Environmental Science
- > Geographic Information Science
- > Mathematics
- > Mechanical and Manufacturing Engineering
- > Minerals and Resources
- > Project Management
- > Urban and Regional Planning
- > Statistics
- > Systems Engineering

For more information about research possibilities, contact
research.itee@unisa.edu.au

Refer to pages 76-78 for the course codes you will need for your application. Please send an email to the relevant email address if unsure which course code to use.



2

check your eligibility

Your eligibility to become a research student at the University depends on the type of degree you wish to study, as well as your prior qualifications and professional experience. Students from non-English speaking countries will also need to demonstrate their capacity to undertake study in English before being accepted into a program.

The eligibility criteria listed below are a minimum. Eligibility is also subject to the assessment of the proposed research, the availability of a supervisor, and any school or research-specific requirements.

Degree	Minimum eligibility requirements
PhD	<p><i>Honours 1, Honours 1 equivalence, Honours 2A, Honours 2A equivalence or an appropriate master degree or equivalent (your qualifications will be assessed for equivalency).</i></p> <p>OR</p> <p>Individual assessment of qualifications and research capabilities as proven through evidence of professional work experience in the field of proposed study and by relevant quality publications. The outcome of this assessment will determine which of the degree options are available to you.</p>
Professional Doctorate	<p><i>Honours 1, Honours 1 equivalence, Honours 2A, Honours 2A equivalence or an appropriate master degree or equivalent (your qualifications will be assessed for equivalency).</i></p> <p>OR</p> <p>Individual assessment of qualifications and research capabilities as proven through evidence of professional work experience in the field of proposed study and by relevant quality publications. The outcome of this assessment will determine which of the degree options are available to you.</p> <p>Professional Doctorate candidates must also demonstrate at least five years practice in a relevant field, and normally within the last ten years.</p>
Masters	<p><i>An Honours degree or a bachelor degree with Honours or a relevant bachelor degree (or equivalent) of at least three years with a minimum credit average, or an appropriate master degree (your qualifications will be assessed for equivalency).</i></p> <p>OR</p> <p>No tertiary qualifications, but you can demonstrate research capabilities through evidence of professional work experience in the field of proposed study and by relevant publications.</p>

Minimum English language entry requirements for international research students

English Language Test (see Note 1)	Score
IELTS (International English Language Testing System) Academic	7.0 for English language-rich programs with a minimum of 6.0 in each sub-score (see Note 2)
	6.5 for non English language-rich programs with a minimum of 6.0 in each sub-score (see Note 2)
OR corresponding results from an equivalent test such as Test of English as a Foreign Language (TOEFL); the University of Cambridge English for Speakers of Other Languages (ESOL) Examinations for the Certificate of Proficiency in English (CPE) or the Certificate in Advanced English (CAE); the Pearson test; or the appropriate academic English language level delivered by the Centre for English Language at the University of South Australia (CELUSA).	

Applicants from countries where English is an official language or who have had recent and relevant experience in an English setting may meet our minimum English entry requirements in a number of alternative ways. Evidence must be provided.

➔ unisa.edu.au/Research/Research-degrees/How-to-apply/English-language-requirements

Note 1: Results from IELTS, University of Cambridge ESOL examinations and TOEFL are generally valid for two years. For scholarships, test results must be valid at the scholarship closing date.

Note 2: To determine which programs are language-rich and which are not, please visit:

➔ unisa.edu.au/research-degree-english-language-requirements



3 Search for a supervisor

The University of South Australia has internationally renowned research supervisors who provide expert supervision across an impressive range of research interests. Many students come to the University to work with specific researchers and learn directly from their expertise and experience.

There are several possible ways of finding a supervisor. For example they could be a UniSA academic you've worked with in the past, or whose research you've read.

Tips on finding a supervisor can be found on the research degrees website:

▶ unisa.edu.au/find-a-supervisor



4 Find a scholarship

There are a variety of scholarships and funding opportunities available to help support you financially throughout your studies. These include a wide range of grants and stipends.

Scholarships will normally have specific opening and closing dates – make sure you read the criteria and application requirements.

If you are applying for a scholarship, you should indicate this when you apply for your research degree. Our online application system will ask for this information.

For more details about scholarship opportunities visit:

▶ unisa.edu.au/research-degree-scholarships



5 Apply

You should prepare these things before you commence your online application:

- > Organise two referee reports. Find out more at
▶ unisa.edu.au/research-degree-referee-reports
- > Transcripts and parchments of undergraduate, honours and postgraduate courses undertaken;
- > Certification of English language proficiency;
- > Passport details or evidence of citizenship;
- > Outline of your proposed research;
- > Current CV;
- > Evidence of publications.

You will also need to know which course code to apply for. See pages 76-78 for options, or please send an email to the relevant address if unsure.

For more information please visit:

▶ unisa.edu.au/research-degrees-apply

You are now ready to apply.

Apply for entry into your program at:

▶ unisa.edu.au/applyonline

Research degrees offered in 2017

Program Name	Program Code	CRCOS Code	Duration (in EFTSL)	2017 Indicative Annual Tuition Fee (A\$)
Business, Management and Law				
Masters by Research				
Accounting	DMRU	000547J	2	31,700
Applied Economics	DMRU	000547J	2	31,700
Finance	DMRU	000547J	2	31,700
Human Resources and Organisation Behaviour	DMRU	000547J	2	31,700
International Business	DMRU	000547J	2	31,700
Law	DMRU	000547J	2	31,700
Management and Corporate Social Responsibility	DMRU	000547J	2	31,700
Marketing	DMRU	000547J	2	31,700
Property	DMRU	000547J	2	31,700
Sports, Tourism and Leisure Management	DMRU	000547J	2	31,700
Doctor of Philosophy (PhD)				
Accounting	DPBU	018568A	4	31,700
Applied Economics	DPBU	018568A	4	31,700
Finance	DPBU	018568A	4	31,700
Human Resources and Organisation Behaviour	DPBU	018568A	4	31,700
International Business	DPBU	018568A	4	31,700
Law	DPBU	018568A	4	31,700
Management and Corporate Social Responsibility	DPBU	018568A	4	31,700
Marketing	DPBU	018568A	4	31,700
Property	DPBU	018568A	4	31,700
Sports, Tourism and Leisure Management	DPBU	018568A	4	31,700
Education, Arts and Social Sciences				
Masters by Research				
Architecture	MMRD	013177A	2	28,400
Australian Studies/Indigenous Studies	MMDE	039461E	2	25,400
Communication	MMRD	024083E	2	28,400
Design (Industrial)	MMRD	013571B	2	28,400
Design (Visual Communication)	MMRD	013571B	2	28,400
Education	MMDE	000619J	2	25,400
Interior Architecture	MMRD	013177A	2	28,400
International Studies	MMRD	020957C	2	28,400
Languages and Linguistics	MMRD	020957C	2	28,400
Social Work and Social Policy	MMRD	040747C	2	28,400
Sociology	MMRD	020957C	2	28,400
Visual Arts	MMRD	024083E	2	28,400
Doctor of Philosophy (PhD)				
Architecture	MPHD	015040B	4	28,400
Australian Studies/Indigenous Studies	MPDE	048558K	4	23,800
Communication	MPHD	040645J	4	28,400
Design (Industrial)	MPHD	070417F	4	28,400
Design (Visual Communication)	MPHD	070417F	4	28,400
Education	MPDE	016149C	4	25,400
Interior Architecture	MPHD	015040B	4	28,400
International Studies	MPHD	040646G	4	28,400
Languages and Linguistics	MPHD	070418E	4	28,400
Psychology	MPHD	040647G	4	28,400
Social Work and Social Policy	MPHD	040648F	4	28,400
Sociology	MPHD	072915E	4	28,400
Visual Arts	MPHD	036284G	4	28,400

Program Name	Program Code	CRICOS Code	Duration (in EFTSL)	2017 Indicative Annual Tuition Fee (A\$)
Health and Medical Sciences				
Masters by Research				
Biomaterials Engineering and Nanomedicine	IMHC	O88999J	2	31,400
Health Sciences A & B	IMHC	O36358F	2	31,400
Human Movement	IMHC	O36359E	2	31,400
Laboratory Technology	IMHC	O36360A	2	31,400
Medical Radiation	IMHC	O65561G	2	31,400
Nursing	IMHC	O24073G	2	31,400
Occupational Therapy	IMHC	O36361M	2	31,400
Pharmaceutical Sciences	IMHC	O65562F	2	31,400
Pharmacy	IMHC	009603M	2	31,400
Physiotherapy	IMHC	O24052A	2	31,400
Podiatry	IMHC	O65563E	2	31,400
Public Health C	IMHC	O36358F	2	31,400
Population Health Practice	IMPU	O84750M	2	31,400
Doctor of Philosophy (PhD)				
Biomaterials Engineering and Nanomedicine	IPHD	O88989M	4	31,400
Health Sciences	IPHD	O79308E	4	31,400
Health Sciences B	IPHD	O79308E	4	31,400
Human Movement	IPHD	O48569G	4	31,400
Medical Radiation	IPHD	O72917C	4	31,400
Medical Science	IPHD	O72918B	4	31,400
Nursing	IPHD	O24085C	4	31,400
Occupational Therapy	IPHD	O72919A	4	31,400
Pharmacology	IPHD	O72920G	4	31,400
Pharmacy	IPHD	O48570C	4	31,400
Physiotherapy	IPHD	O72921G	4	31,400
Podiatry	IPHD	O72922F	4	31,400
Public Health A, B & C	IPHD	O72923E	4	31,400
Science and Technology				
Masters by Research				
Applied Physics	LMIE	O24051B	2	33,400
Bioinformatics	LMIE	O65888F	2	33,400
Biomaterials Engineering and Nanomedicine (ENE)	LMIE	O88987D	2	33,400
Biomaterials Engineering and Nanomedicine (ITMS)	LMIE	O88998K	2	33,400
Biomaterials Engineering and Nanomedicine (NBE)	LMIE	O88993D	2	33,400
Civil Engineering	LMIE	O65883M	2	33,400
Computer and Information Science	LMIE	O65882A	2	33,400
Construction Management	LMIE	O13179K	2	33,400
Energy and Advanced Manufacturing (ENE)	LMIE	O88993D	2	33,400
Energy and Advanced Manufacturing (ITMS)	LMIE	O88996A	2	33,400
Energy and Advanced Manufacturing (NBE)	LMIE	O88991F	2	33,400
Environmental Science	LMIE	O65881B	2	33,400
Environmental Science and Engineering (ENE)	LMIE	O88992E	2	33,400
Environmental Science and Engineering (ITMS)	LMIE	O88997M	2	33,400
Environmental Science and Engineering (NBE)	LMIE	O88992E	2	33,400
Electrical and Information Engineering	LMIE	O65884K	2	33,400
Geographic Information Science	LMIE	O65889E	2	33,400
Mathematics	LMIE	000161E	2	33,400
Mechanical and Manufacturing Engineering	LMIE	O65886G	2	33,400
Minerals and Resources (ENE)	LMIE	O88994C	2	33,400
Minerals and Resources (ITMS)	LMIE	O88995B	2	33,400

Research degrees offered in 2017

Program Name	Program Code	CRICOS Code	Duration (in EFTSL)	2017 Indicative Annual Tuition Fee (A\$)
Minerals and Resources (NBE)	LMIE	O88990G	2	33,400
Project Management	LMIE	O88579G	2	33,400
Statistics	LMIE	O65891M	2	33,400
Systems Engineering	LMIE	O65887G	2	33,400
Urban and Regional Planning	LMIE	O24074F	2	33,400
Doctor of Philosophy (PhD)				
Applied Physics	LPHD	O48559J	4	33,400
Bioinformatics	LPHD	O65902B	4	33,400
Biomaterials Engineering and Nanomedicine (ENE)	LPHD	O88988A	4	33,400
Biomaterials Engineering and Nanomedicine (ITMS)	LPHD	O88988A	4	33,400
Biomaterials Engineering and Nanomedicine (NBE)	LPHD	O88988A	4	33,400
Civil Engineering	LPHD	O73042G	4	33,400
Computer and Information Science	LPHD	O65903A	4	33,400
Construction Management	LPHD	O73043G	4	33,400
Electrical and Information Engineering	LPHD	O65904M	4	33,400
Energy and Advanced Manufacturing (ENE)	LPHD	O88986C	4	33,400
Energy and Advanced Manufacturing (ITMS)	LPHD	O88986C	4	33,400
Energy and Advanced Manufacturing (NBE)	LPHD	O88986C	4	33,400
Environmental Science	LPHD	O65905K	4	33,400
Environmental Science and Engineering (ENE)	LPHD	O88987B	4	33,400
Environmental Science and Engineering (ITMS)	LPHD	O88987B	4	33,400
Environmental Science and Engineering (NBE)	LPHD	O88987B	4	33,400
Geographic Information Science	LPHD	O13566K	4	33,400
Industrial Doctoral Training Centre (Mathematics and Statistics)	LPHD	O65909F	4	33,400
Mathematics	LPHD	O65909F	4	33,400
Mechanical and Manufacturing Engineering	LPHD	O65910B	4	33,400
Minerals and Resources (ENE)	LPHD	O88985D	4	33,400
Minerals and Resources (ITMS)	LPHD	O88985D	4	33,400
Minerals and Resources (NBE)	LPHD	O88985D	4	33,400
Project Management	LPHD	O75140A	4	33,400
Statistics	LPHD	O65909F	4	33,400
Systems Engineering	LPHD	O65901C	4	33,400
Urban and Regional Planning	LPHD	O65911A	4	33,400
Doctor of Project Management	IPPJ	O48572A	4	31,400



Undergraduate Postgraduate coursework

Note: Research degree applicants must apply online

Instructions (Please read before completing the application)

- This form can be completed electronically or by hand. If handwriting your application please write clearly and in **BLOCK LETTERS**. Download electronic application form at unisa.edu.au/international-apply
- If submitting electronically the declaration checkbox is recognised as the equivalent of your signature.
- Your application cannot be considered unless all essential documents are attached
- Please send your application at least two months before you wish to commence your studies
- DO NOT** use this form if you are applying for a research higher degree. Students applying for a Research program must apply online. For further details please visit unisa.edu.au/resdegrees

Email your application to:

applications@international.unisa.edu.au

Mail your application to:

UniSA International
University of South Australia
Level 1, 101 Currie St
Adelaide, SA 5000, Australia

1. Have you applied to the University of South Australia before?

Yes No If yes please quote your application or student number

2. Personal details

Mr Mrs Ms Miss Date of birth: Male Female

Family name:	First name:	Middle name:
Citizenship:	Country of birth:	Passport number*:

*Please attach a copy of your **personal details and signature page** of your passport with the application

Do you currently hold an Australian Visa? Yes No Type of visa (eg Student, Temporary Resident):

Have you ever had a visa refused, cancelled or overstayed your visa? Yes No If yes, please provide the decision record or correspondence.

Have you ever been excluded from an Australian CRICOS registered institution before? Yes No If yes please provide documentation.

Do you have a disability or long term illness? Yes No Do you require support services? Yes No

If yes please provide details:

3. Address details (Mandatory)

Email address: Mobile:

Permanent address in home country (please do not use PO box numbers):

Number and street:		
City:	State:	Post/Zip code:
Country:	Phone:	

Address for correspondence (if different to above):

Number and street:		
City:	State:	Post/Zip code:
Country:	Phone:	

4. Academic qualifications

Please provide certified copies of your qualifications and academic transcripts. **Please do not send original documents.**

Name of course/award <small>ie. secondary, A Levels, Diploma, Bachelor, etc.</small>	Name of school/institution <small>ie. University of South Australia</small>	Country/State <small>ie. Australia</small>	Language of instruction <small>ie. English</small>	Start date <small>ie. month/year</small>	Finish date <small>ie. month/year</small>

If you have not completed your above studies do you intend to complete before starting studies with us? Yes No

5. Credit/Advanced standing

Do you wish to have any completed tertiary studies considered for credit/advanced standing? Yes No

If yes, you must **attach** detailed syllabuses (curriculum) of courses you have completed. Credit/Advanced standing cannot be assessed without this information.

6. Agent details

You can apply directly to the University or via one of our Education Agents. A full list of the University's agents is at: unisa.edu.au/agent

I nominate the following agent and authorise the University of South Australia to release personal information relevant to my application and visa documentation to this agent.

Name of agent:

Representative/Agent stamp



7. Financial support

Please indicate your source of financial support and for invoice purposes, please provide the name and contact details of the person or organisation paying your fees.

- I am a private student supported by myself/my family
- I am fully sponsored by an Australian Government Scholarship
- I am fully sponsored by my employer (**attach documentation**)
- I am fully sponsored by my home government (**attach documentation**)
- I will apply for financial aid from my government, employer or the Australian Government

Name of sponsor:

8. Program preferences and start date

Your second and third preferences will be processed only if your first choice is unsuccessful.

	Program code <small>ie. LBMI</small>	Program name <small>ie. Bachelor of Engineering</small>	Specialisation <small>ie. Civil Engineering</small>	Year <small>ie. 2016</small>	Study Period (SP) <small>ie. SP2</small>	Semester 1 SP1 January SP2 February SP3 April Semester 2 SP4 June SP5 July SP6 September Summer Term SP7 October
1						
2						
3						

Please select a mode of study Internal (Study on campus in Adelaide) External (Study in your home country)

If external do you wish to study Full-time Part-time

9. Overseas Student Health Cover (OSHC)

Please select the type of cover you would like on your offer Single cover Dual cover Multi family cover

10. Declaration

- I declare that the information provided by me in this application is true and accurate to the best of my knowledge. I agree to tell the University of South Australia immediately if there is any change to the information I have given in this application. I have read and understood the University's Guidelines on Payment and Refund of Fees for International Students set out at unisa.edu.au/international/forms-fees
- I confirm I have sufficient financial resources to pay for travel, tuition and living expenses for myself and any dependants for the duration of my stay in Australia. I understand that if I obtain work in Australia this is considered an opportunity for social interaction and not as a source of income. I am a genuine student and I intend to obtain a successful education outcome and stay in Australia temporarily.
- I authorise the University of South Australia to make enquiries and obtain information and my official records from third parties including but not limited to the Department of Immigration and Border Protection, government bodies, educational institutes previously attended by me, former or current employers and financial institutions. I understand that the University may release my personal information to the University's partner educational institutions, government departments or any other relevant bodies for verification and assessment. I understand that any information obtained will be kept on record and considered when assessing my application for entry into the program.
- I understand that the University of South Australia may vary or reverse any decision regarding admission or enrolment made on the basis of incorrect, incomplete or fraudulent information or documentation. I understand the University of South Australia reserves the right to inform other institutions and the relevant government departments of the provision of any such fraudulent documentation or information.
- I agree that if I do not meet the entry requirements for the program I have applied for that I can be considered for an alternative program at the University of South Australia and may have my application forwarded to University's partner pathway provider the South Australian Institute of Business and Technology (SAIBT).
- I acknowledge that the documents submitted with my application become the property of the University and will not be returned to me.

I declare that I have read, understood and agree to the above Declaration and acknowledge that checking this box is the equivalent of a signature.

Full name (print):

Date:

Signature:

11. Checklist (Please ensure you have):

- Attached a copy of your personal details and a signature page of your passport and / or visa grant letter (if applicable).
- Attached copies of your qualifications and academic transcripts. You must also include an explanation of the grading system at your home institution (this information is often found on the reverse side of official academic transcripts). English translations are required if the original documents are not in English.
- Attached a detailed syllabus if you wish to be considered for credit.
- Attached any relevant financial support documentation.
- Attached any copies of your IELTS/TOEFL results or other English tests where applicable.
- Signed the declaration.

All documents must be certified copies. A certified copy is a copy of the original document that has been certified with an original stamp by an official such as the University agent, our staff member, Justice of the Peace, Notary Public, police officer or examining authority. Please do not send irreplaceable original documents eg. your degree parchment. University of South Australia does not return documents and they will be destroyed.

Please note: Some programs may require additional information. Please check the program home page for details via programs.unisa.edu.au

Connect with UniSA

Our presence spans the social media landscape, making connecting with us easier than ever before.

Connect with the University of South Australia by following us:

f Facebook
facebook.com/UniSA
facebook.com/UniSACityEast
facebook.com/UniSACityWest
facebook.com/unisamagillcampus
facebook.com/UniSAMawsonLakes

t Twitter
twitter.com/UniversitySA
twitter.com/UniSAnewsroom

YouTube
youtube.com/unisouthaustralia

Instagram
instagram.com/universitysa

in LinkedIn
linkedin.com/company/university-of-south-australia

▶ You can also find out more about us at...

Weibo: @studyatunisa
Youku: UniSA
WeChat: 南澳大学中国办公室



twitter

Our @SamstagMuseum listed as a top thing to do in #Adelaide in @nytimes '52 places to go in 2015'



University of South Australia
February 24 at 11:08am
Welcome new students! O-Week kicks off at Magill campus



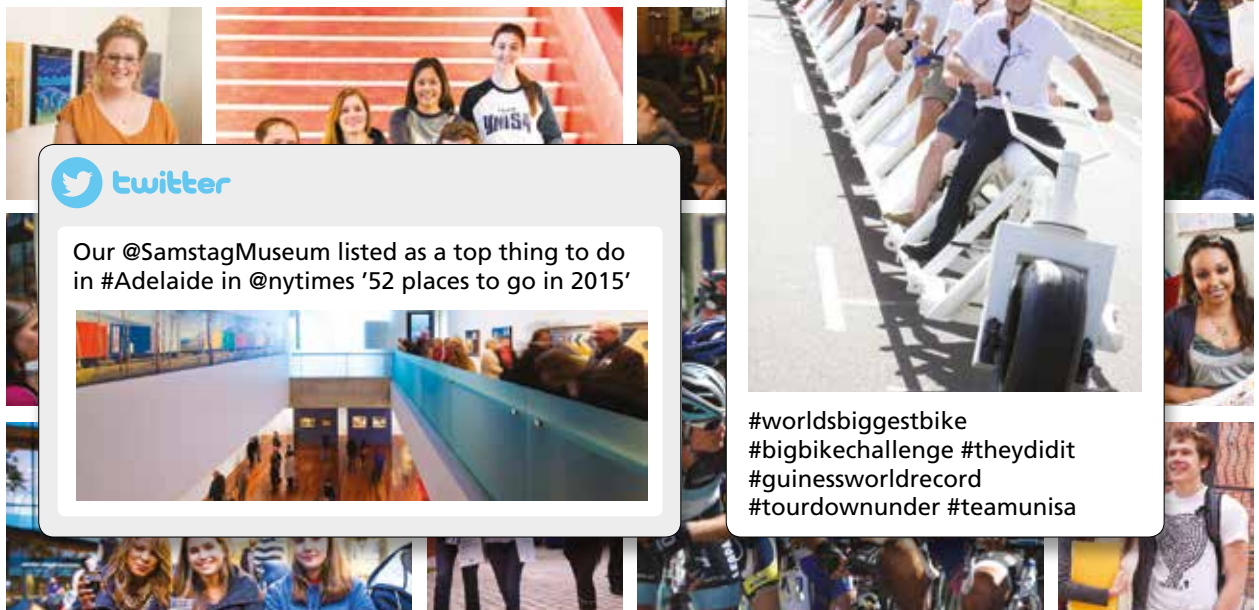
Instagram



@universitysa



#worldsbiggestbike
#bigbikechallenge #theydidit
#guinnessworldrecord
#tourdownunder #teamunisa





University of South Australia

Further information

unisa.edu.au/international

Telephone: +613 9627 4854

Facsimile: +618 8302 9121

Email: international.office@unisa.edu.au

 [youtube.com/unisouthaustralia](https://www.youtube.com/unisouthaustralia)

 [facebook.com/UniSA](https://www.facebook.com/UniSA)

 twitter.com/UniversitySA

 [instagram/universitysa](https://www.instagram.com/universitysa)

Weibo: @studyatunisa

Youku: UniSA

WeChat: 南澳大学中国办公室

Freecall:

Australia: 1800 1818 58

China (Northern): 10 800 61 00 245

China (Southern): 10 800 261 0245

Indonesia: 001 803 61 269

South Korea: 0079 8612 1017

Taiwan: 00801 611 343

The University of South Australia reserves the right to alter, amend or delete any program, fee, course, admission requirement, mode of delivery or other arrangement without prior notice.

Information correct at time of printing (December 2015)

CRICOS provider number 00121B



studyinaustralia.gov.au